

BELZONA EXTENDS THE LIFE OF A WATER PUMP

CUSTOMER

Washington, USA

APPLICATION DATE

1992

APPLICATION SITUATION

Water Pump.

PROBLEM

The pump removes dirty water used to wash potatoes as they enter the processing plant. The entrained dirt wears the pump impeller prematurely.

PRODUCTS

Belzona 2131 (D & A Fluid Elastomer)

Belzona 1321 (Ceramic S-Metal)

Belzona 4911 (Magma TX Conditioner)

SUBSTRATE

Cast Iron

APPLICATION METHOD

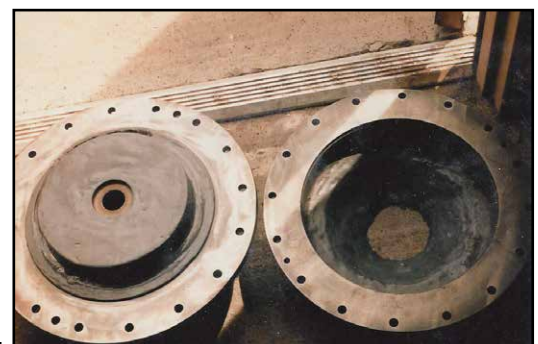
The new pump was grit blasted. Belzona 4911 was applied to the impeller and allowed to cure. Belzona 2131 was brushed onto the surface. Two coats of Belzona 1321 was applied to the casing. The application was carried out in accordance with Belzona Know-How System Leaflets CEP-1 & CEP-3.

BELZONA FACTS

The coating extended the life of the pump, reducing maintenance costs and downtime.

PICTURES

1. New impeller blasted and conditioned
2. Impeller coated with Belzona 2131
3. Two coats of Belzona 1321 applied to casing



For more examples of *Belzona Know-How In Action*, please visit <http://khia.belzona.com>



Belzona products are manufactured under an ISO 9000 Registered Quality Management System.

UK • USA • Canada • Thailand
www.belzona.com

