

BELZONA SAVES CENTRIFUGAL PUMP FROM REPLACEMENT

CUSTOMER
WA, USA

APPLICATION DATE
1992

APPLICATION SITUATION
Centrifugal pump.

PROBLEM
Erosion/Corrosion was eating away this water pump at a fruit processing company, causing it to pump less water than was required. It was then pulled from the scrap pile.

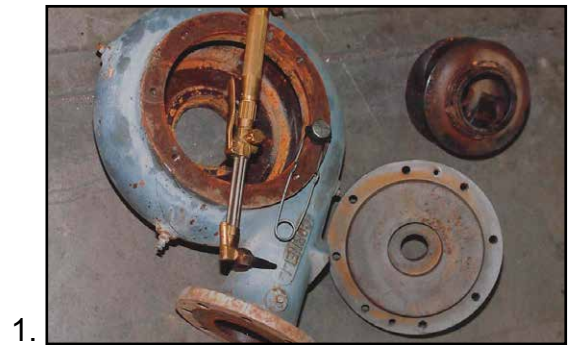
PRODUCTS
Belzona 1341 (Supermetalglide)

SUBSTRATE
Cast Iron

APPLICATION METHOD
The application was carried out in accordance with Belzona Know-How System Leaflet CEP-10. The centrifugal pump was rebuilt to improve efficiency.

BELZONA FACTS
The customer was ready to replace the pump because it just wasn't pumping enough water. Belzona 1341 improved the volume, enough to satisfy their needs.

- PICTURES**
1. Damaged Cornell pump
 2. Coating of impeller
 3. Coating of pump casing



For more examples of *Belzona Know-How In Action*, please visit <http://khia.belzona.com>



Belzona products are manufactured under an ISO 9000 Registered Quality Management System.

UK • USA • Canada • Thailand
www.belzona.com


BELZONA
Repair • Protect • Improve