

BELZONA RESTORES VACUUM PUMP AFFECTED BY DEEP EROSION

CUSTOMER

Mine, Peru

APPLICATION DATE

April 2008

APPLICATION SITUATION

Interior of the central casing of a large liquid ring vacuum pump

PROBLEM

Seal water drags solids deeply eroding the central body all around, on both sides of the central ribbing weakening the casing and even making a hole at one point.

PRODUCTS

Belzona 1311 (Ceramic R-Metal)

Belzona 1341 (Supermetalgilde)

SUBSTRATE

Cast iron

APPLICATION METHOD

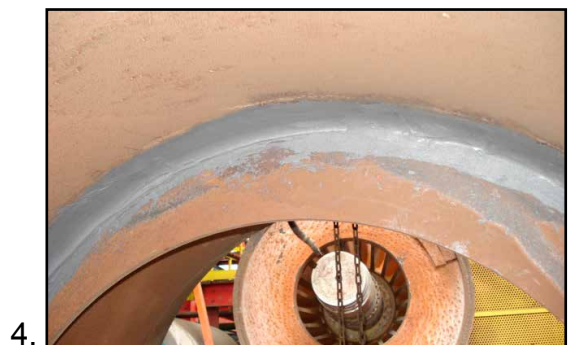
The application was carried out in accordance with the Belzona Know-How System Leaflet CEP-5. It was locally blasted and filled in using Belzona 1311 and was covered with Belzona 1341.

BELZONA FACTS

For each hour that the plant is closed, the mine loses significant revenue. The delivery of a new casing would take too long. Using Belzona has saved production and the repair was completed in just 6 hours, during the plant's general maintenance downtime planned for one day. Thanks to Belzona, the plant was never left without the vacuum pump.

PICTURES

1. Disassembly of components
2. Grooves caused by erosion all around on both sides
3. Refilled with Belzona 1311
4. Reconstructed area was later covered with Belzona 1341.



For more examples of *Belzona Know-How In Action*, please visit <http://khia.belzona.com>



Belzona products are manufactured under an ISO 9000 Registered Quality Management System.

UK • USA • Canada • Thailand
www.belzona.com


BELZONA[®]
Repair • Protect • Improve