

BELZONA REPAIR KEEPS BELTS TRACKING

CUSTOMER

Metal Recycler, Tennessee, USA

APPLICATION DATE

August 2015

APPLICATION SITUATION

Conveyor belt.

PROBLEM

Several small holes in a thin (1/8") conveyor belt made of PVC were allowing debris to fall onto the conveyor belt bed and causing the belt to track improperly. Most of the belt was in good condition and the customer was looking for a solution to extend the conveyor belt lifetime rather than replace it.

PRODUCTS

Belzona 2311 (SR Elastomer)

Belzona 2911 (Elastomer QD Conditioner)

Belzona 9341 (Reinforcement Sheet)

Belzona Roughing Brush

SUBSTRATE

PVC Conveyor Belt

APPLICATION METHOD

The application was carried out using a modified version of Belzona Know-How System Leaflet SHM-1. The surface was cleaned using a cleaner/degreaser and roughened using the Belzona roughing brush. The area to be repaired was then taped off and conditioned with Belzona 2911 and allowed to dry until touch-dry. Since the belt was only 1/8" thick and not multi layered, it was not possible to remove the top layer and insert the repair material to create a flush surface. Alternatively, a mixing board was used as a backer to the area to be repaired. The hole was filled and the substrate coated with Belzona 2311. Then, Belzona 9341 was embedded with Belzona 2311 and laid over the hole and topped with more Belzona 2311 so it would not leave the reinforcement sheet exposed. Two repairs were carried out in this manner as well as a smaller hole repair without the reinforcement sheet.

BELZONA FACTS

The customer had been unable to find a way to repair the thin belt and was expecting to replace it, although it was mainly in good shape and had been in service for less than a year. Despite the belt only being 30 feet in length, it was 10 feet wide and for a specialty machine that made replacing it regularly, expensive and unacceptable. Three holes were repaired in less than two hours and since it was done at the end of the work day, it cost the customer no downtime.

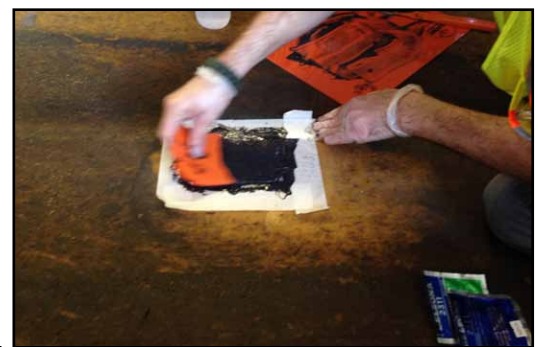
PICTURES

1. Application area cleaned and conditioned
2. Application in progress
3. Repair completed
4. Repair re-visited after 4 weeks of impact and abrasion from sharp, shredded metal

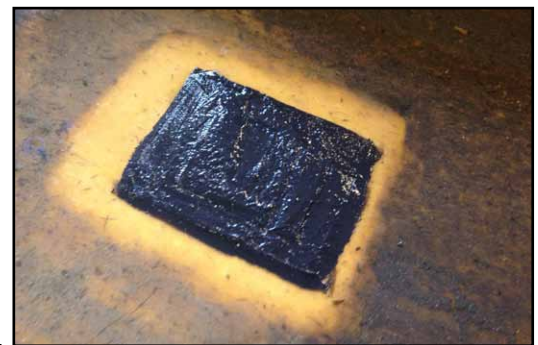
For more examples of *Belzona Know-How In Action*, please visit <http://khia.belzona.com>



1.



2.



3.



4.



Belzona products are manufactured under an ISO 9000 Registered Quality Management System.

UK • USA • Canada • Thailand
www.belzona.com


BELZONA
Repair • Protect • Improve