

INTERNAL REPAIR AND PROTECTION OF A SPLIT CASE PUMP WITH BELZONA 1341

CUSTOMER

France

APPLICATION DATE

June 2014

APPLICATION SITUATION

Internal surface of a splitting-case pump.

PROBLEM

The internal surface of this splitting-case pump was badly damaged by corrosion and needed to be rebuilt and protected.

PRODUCTS

Belzona 1111 (Super Metal)

Belzona 1341 (Supermetalglide)

SUBSTRATE

Cast iron

APPLICATION METHOD

The substrate was first grit blasted and cleaned with acetone. Then the displacement nose was rebuilt using Belzona 1111. Finally, the whole internal surface was protected with 2 coats of Belzona 1341. The application was carried out in accordance with Belzona system leaflet CEP-3.

BELZONA FACTS

The advantage of the system is that a possible wear of the coating would be easily identified thanks to the 2 different colours used (grey and blue). Besides, the smoothness of the coating can also increase the pump efficiency.

PICTURES

1. Before the application.
2. Showing the damage on the internal part of the pump.
3. First coat of Belzona 1341 in grey.
4. Second coat of Belzona 1341 in blue.



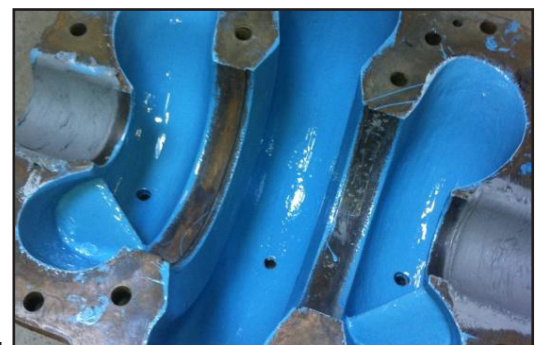
1.



2.



3.



4.

For more examples of *Belzona Know-How In Action*, please visit <http://khia.belzona.com>



Belzona products are manufactured under an ISO 9000 Registered Quality Management System.

UK • USA • Canada • Thailand
www.belzona.com

