

BELZONA REPAIRS AND PROTECTS CHIMNEY MASONRY

CUSTOMER

Czech Republic

APPLICATION DATE

May 2015

APPLICATION SITUATION

Flue gas chimney stack.

PROBLEM

The top of the stack had deteriorated due to flue gas and water ingress, causing the mortar to break down and bricks to become loose.

PRODUCTS

Belzona 4111 (Magma-Quartz)

Belzona 4141 (Magma-Built)

Belzona 4151 (Magma-Quartz Resin)

Belzona 4341 (Magma CR4)

Belzona 4911 (Magma TX Conditioner)

SUBSTRATE

Brickwork

APPLICATION METHOD

The application was carried out in accordance with a modified version of Belzona Know-How System Leaflet WPA-4. The top profile was reformed with new brickwork and Belzona 4111 using preformed sheet metal formers around the outer and inner circumference as guides. The deteriorated mortar was then repaired using Belzona 4141 due to its lightweight properties allowing repair on vertical surfaces. The whole area was then coated with Belzona 4341 to give long term protection against flue gases.

BELZONA FACTS

The customer chose Belzona because the epoxy-based products provided solutions to both the repair and protection problems for the long-term with minimal downtime.

PICTURES

1. The deteriorated stack.
2. Work underway.
3. The sheet metal formers with finished Belzona 4111.
4. The finished job with Belzona 4341 coating.



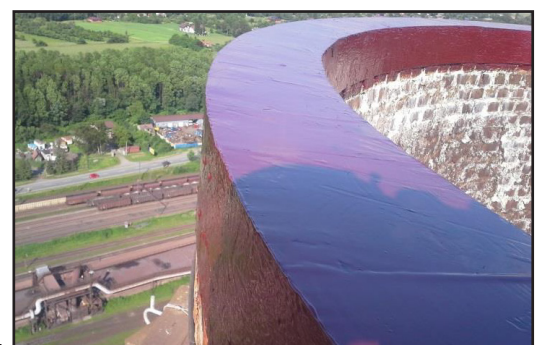
1.



2.



3.



4.

For more examples of *Belzona Know-How In Action*, please visit <http://khia.belzona.com>



Belzona products are manufactured under an ISO 9000 Registered Quality Management System.

UK • USA • Canada • Thailand
www.belzona.com

