

BLAST FURNACE GAS LEAK PIPE REPAIR

CUSTOMER

Czech Republic

APPLICATION DATE

October 2015

APPLICATION SITUATION

Steel plant blast furnace gas inlet.

PROBLEM

Steel plant blast furnace gas inlet had developed a leak and was losing pressure. The repair needed to be done whilst equipment was online.

PRODUCTS

Belzona 1211 (E-Metal)

Belzona 1111 (Super Metal)

SUBSTRATE

Steel

APPLICATION METHOD

The gas leak was causing a risk of explosion, so Belzona 1211 was used to initially seal the crack and stem the flow of gas. Once the leak was stopped, the necessary surface preparation was carried out with a grinder so that a stronger reinforcement of Belzona 1111 and Belzona 9341 reinforcement mesh could be applied to the pipe to provide a long-term reinforcement to the damaged area.

BELZONA FACTS

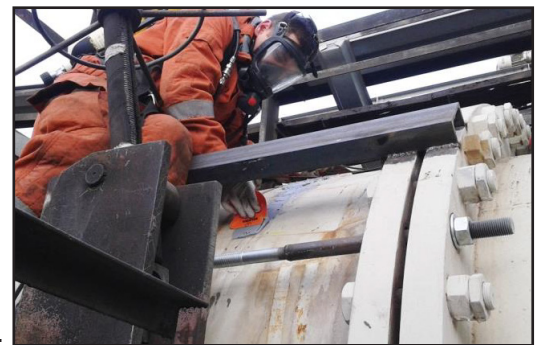
Use of Belzona solutions allowed the work to be carried out whilst the pipe was online, avoiding costly shutdowns and risk of explosion.

PICTURES

1. The blast furnace gas inlet.
2. The repair is underway.
3. The finished repair.



1.



2.



3.

For more examples of *Belzona Know-How In Action*, please visit <http://khia.belzona.com>



Belzona products are manufactured under an ISO 9000 Registered Quality Management System.

UK • USA • Canada • Thailand
www.belzona.com

