

## OLD PUMPS REPAIRED, PROTECTED AND IMPROVED WITH BELZONA

### CUSTOMER

Dry Dock Facility, BC, Canada

### APPLICATION DATE

August 2017

### APPLICATION SITUATION

Pumps housing building at a Canadian historic site. 30 ft high pumps.

### PROBLEM

The pumps were damaged by erosion-corrosion due to the salt content in the water they were pumping. Holes had developed in some of the cast iron casings and stuffing boxes also needed major rebuilding. Although the pumps were old, replacing them was not possible.

### PRODUCTS

Belzona 1121

Belzona 1341

### SUBSTRATE

Cast Iron

### APPLICATION METHOD

The application was carried out in accordance with modified versions of Belzona Know-How System Leaflets CEP-1 and CEP-3. Belzona 1121 was used to rebuild and repair the eroded surfaces. Belzona 1341 was used to improve the pumps performance. Due to the large size of the pumps and related inlets and outlets, it was decided to blast in stages and then protect with Belzona 1341. This was followed by a skim coat of Belzona 1341/1121 mixture to fill in most of the lower depressions. The remaining voids were filled with Belzona 1121. The units received a final brush blast before 2 successive coats of Belzona 1341 grey and blue were applied.

### BELZONA FACTS

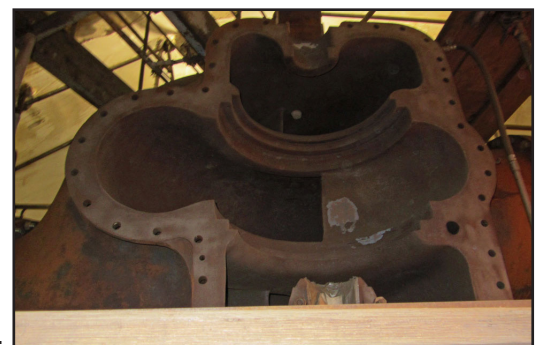
The project spanned 3 years at the dry dock had to remain in service all the time as a result of one pump had to be operational all the time. The dry dock continues to use Belzona products and solutions for many problems associated with the dry dock.

### PICTURES

1. 30 ft high pump.
2. Showing damage from erosion-corrosion.
3. Application of Belzona 1341 Blue in progress.
4. Complete application.



1.



2.



3.



4.

For more examples of *Belzona Know-How In Action*, please visit <http://khia.belzona.com>



Belzona products are manufactured under an ISO 9000 Registered Quality Management System.

UK • USA • Canada • Thailand  
[www.belzona.com](http://www.belzona.com)

