

WEAR PLATES IN ROLLING MILL SECURED WITH BELZONA

CUSTOMER

Steel plant, Slovakia

APPLICATION DATE

2015

APPLICATION SITUATION

Customer needed to change wear plates on steel rolling mill.

PROBLEM

An irregular shim is required to secure the wear plates once levelled and bolted in place.

PRODUCTS

Belzona 1321 (Ceramic S Metal)

SUBSTRATE

Steel and hardox

APPLICATION METHOD

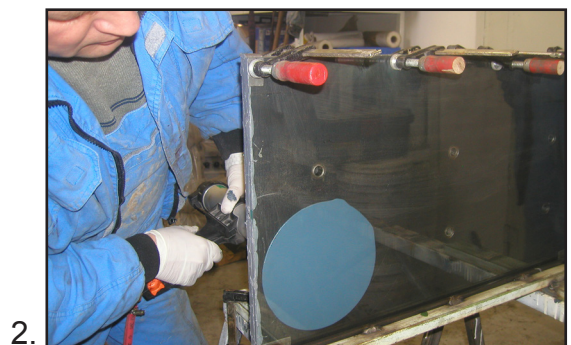
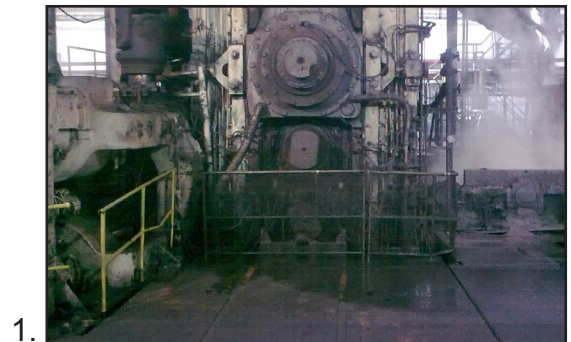
Application was carried out in accordance with Belzona System Leaflet GSS-9.

BELZONA FACTS

Wear plates have to be adjusted, tightened and then Belzona 1321 injected to create irregular shim between plate and mill frame. This is a routine application for Belzona 1321 which demonstrates excellent compressive strength required for this application.

PICTURES

1. The Rolling Mill
2. Testing of the Belzona 1321 injection
3. Wear plate
4. Belzona 1321 injection in action



For more examples of *Belzona Know-How In Action*, please visit <http://khia.belzona.com>



Belzona products are manufactured under an ISO 9000 Registered Quality Management System.

UK • USA • Canada • Thailand
www.belzona.com

