

## BELZONA UPGRADES SPIRITS CONTAINMENT AREA

### CUSTOMER

Distillery, Scotland

### APPLICATION DATE

2011

### APPLICATION SITUATION

Spirit containment area/bund became damaged over time.

### PROBLEM

The existing protective system had failed. The chemical containment area could no longer be relied upon to prevent liquid loss into the groundwater/watercourse in the event of a spillage.

### PRODUCTS

Belzona 4131 (Magma-Screed)

Belzona 4141 (Magma-Build)

Belzona 5811 (Immersion Grade)

### SUBSTRATE

Concrete

### APPLICATION METHOD

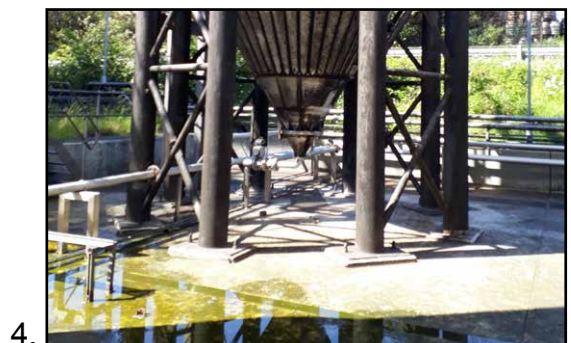
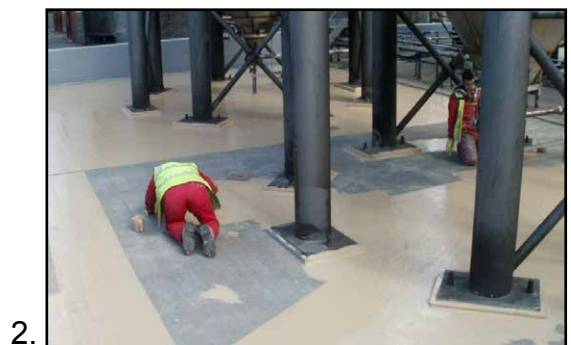
Application was carried out in accordance with Belzona Know-How System Leaflet TCC-15. Belzona 4131 and Belzona 4141 were used to repair the degraded sections of the walls and to create fillets to all horizontal and vertical corners of the bund. The floor was screeded with Belzona 4131 at 6mm to provide maximum impact resistance. A two coat system of Belzona 5811 was then applied to all the internal surfaces of the bund.

### BELZONA FACTS

The Belzona system provides excellent resistance to permeation. The reinforcement of wall and floor joints will ensure long term containment without cracking or breaks in the bund lining. The coating is a bit dirty (covered in whisky black fungus) but otherwise in perfect condition 8 years on!

### PICTURES

1. Containment area prior to Belzona Application
2. Application of Belzona 5811 underway
3. Completed Application
4. Area revisited in 2019



For more examples of *Belzona Know-How In Action*, please visit <http://khia.belzona.com>

Belzona products are manufactured under an ISO 9000 Registered Quality Management System.

UK • USA • Canada • China  
[www.belzona.com](http://www.belzona.com)

  
**BELZONA**<sup>®</sup>  
Repair • Protect • Improve