

BELZONA 1111 & BELZONA 4311 RECONSTRUCTS AND PROTECTS CHEMICAL PUMP

CUSTOMER
Switzerland

APPLICATION DATE
15.11.2019

APPLICATION SITUATION
KSB centrifugal pump which is used for pumping chemicals, in a sugar factory.

PROBLEM
The chemicals attacked or completely destroyed the flange surfaces and parts of the housing.

PRODUCTS
Belzona 1111 (Super-Metal)
Belzona 9111 (Degreaser)
Belzona 4311 (Magma CR1)
Belzona Flange Face Forming Kit

SUBSTRATE
Cast Iron

APPLICATION METHOD
Re-built with Belzona 1111 with the use of the Flange Face forming kit and then protected with a Belzona 4311 in accordance with Belzona Know-How System Leaflet CEP-03.

BELZONA FACTS
The client trusted Belzona with the re-build of the flanges and coating of the internal lining due to the experience of the local distributor with repairing pumps in the local Swiss market.

PICTURES

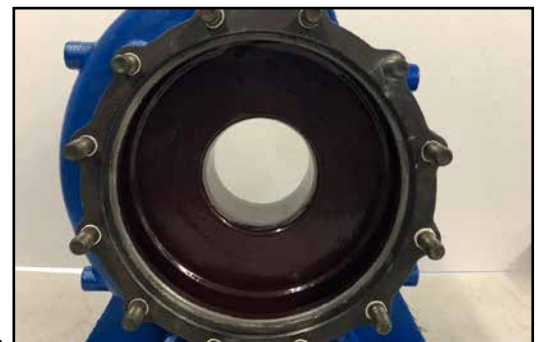
1. Damaged pump
2. Flange reform
3. Internal coating complete
4. Flange reformed.



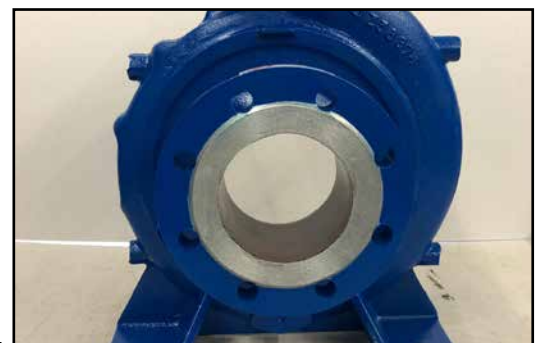
1.



2.



3.



4.

For more examples of *Belzona Know-How In Action*, please visit <http://khia.belzona.com>



Belzona products are manufactured under an ISO 9000 Registered Quality Management System.

UK • USA • Canada • Thailand
www.belzona.com

