

## MINE LOCOMOTIVE AXLE REPAIR

### CUSTOMER

Brown coal Mine plant, Slovakia

### APPLICATION DATE

2005

### APPLICATION SITUATION

Slide assembly wear of the shaft axle caused by a bronze bearing and causing a high level of noise.

### PROBLEM

Failure of the shaft

### PRODUCTS

Belzona 1311 (Ceramic R-Metal)

### SUBSTRATE

Steel

### APPLICATION METHOD

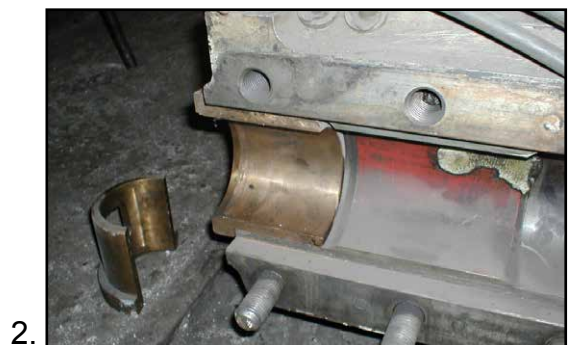
Application was carried out in accordance with Belzona Know-How System Leaflet MPT-1. Shaft was turned down and left with coarse thread before being rebuilt with Belzona 1311 followed by machining back to original diameter.

### BELZONA FACTS

First repair in 2005 was done and still working. Since 2005 several of these repairs have been completed.

### PICTURES

1. Mine locomotive
2. Failed bearing
3. Repair in progress
4. Renovated axle



For more examples of *Belzona Know-How In Action*, please visit <http://khia.belzona.com>



Belzona products are manufactured under an ISO 9000 Registered Quality Management System.

UK • USA • Canada • Thailand  
[www.belzona.com](http://www.belzona.com)

