

TURBO SEPARATOR REPAIR WITH BELZONA 1818

CUSTOMER

Brisbane, Australia

APPLICATION DATE

Mar-21

APPLICATION SITUATION

Turbo separator in Paper recycling plant

PROBLEM

The Turbo Separator is a disc screen specially designed for course screening, primarily removing light and heavy impurities from wastepaper. The unit is lined with thick Basalt tiles and has a hard-wearing grouting compound applied over the joints between the tiles. Over the years, this grouting compound would wear away leaving the joints unprotected. This is a very abrasive environment.

PRODUCTS

Belzona 1818

SUBSTRATE

Basalt Tiles

APPLICATION METHOD

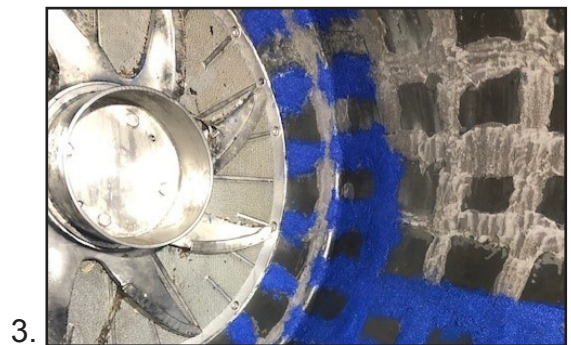
After cleaning out the pulp, the Turbo separator was dried out using rags. Surface preparation was achieved using a diamond blade on an angle grinder to create a "key" for Belzona 1818. Belzona 1818 was mixed and applied with ease, including overhead areas.

BELZONA FACTS

Previously, Belzona 1812 was used to repair this turbo separator. Belzona 1818 provided: - Easier vertical and overhead application - Lower surface preparation needs - Quicker back to service - Time and cost savings.

PICTURES

1. Worn grouting system
2. Application in progress
3. Application in progress
4. Application complete



For more examples of *Belzona Know-How In Action*, please visit <http://khia.belzona.com>

Belzona products are manufactured under an ISO 9000 Registered Quality Management System.

www.belzona.com

Copyright © Belzona International Limited 2021


BELZONA[®]
Repair • Protect • Improve