

AMINE REGENERATOR TOWER RECEIVES BELZONA PATCH REPAIRS

CUSTOMER

United Kingdom

APPLICATION DATE

May-21

APPLICATION SITUATION

During a vessel inspection metal loss caused by corrosion was noted up to a maximum depth of 5mm.

PROBLEM

Due to heat treatment requirements weld repairs were not possible. A cold applied corrosion/erosion resistant solution was required.

PRODUCTS

Belzona 1511 (Super-HT Metal)

Belzona 1593

SUBSTRATE

Carbon Steel

APPLICATION METHOD

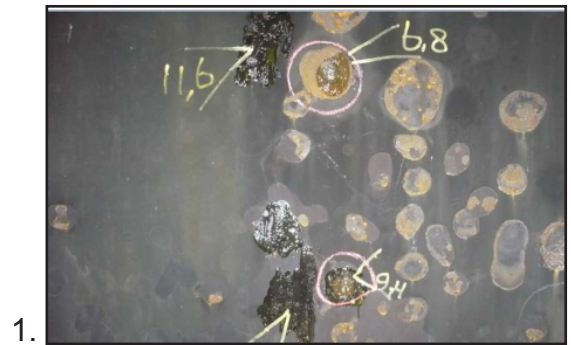
The area was grit blasted using chilled iron. Areas of metal loss were then rebuilt with Belzona 1511 HT Metal. Two coats of Belzona 1593 were then applied to the area.

BELZONA FACTS

The Belzona solution was applied in two days. It will provide long term protection for the vessel against the corrosive process conditions.

PICTURES

1. Metal loss picked up during inspection
2. Belzona 1593 applied
3. Close up of the coating



For more examples of *Belzona Know-How In Action*, please visit <http://khia.belzona.com>

Belzona products are manufactured under an ISO 9000 Registered Quality Management System.

www.belzona.com

Copyright © Belzona International Limited 2021


BELZONA[®]
Repair • Protect • Improve