

## BELZONA IN THE CEMENT INDUSTRY

### CUSTOMER

Germany

### APPLICATION DATE

Apr-20

### APPLICATION SITUATION

Ball Mill 4000mm diameter in Germany.

### PROBLEM

In the mill there is a chamber for pre-drying with lift paddles. Under the paddles the wall eroded over years from cement dust (between 0 and 12mm). When the client changed the paddles, they wanted an inner wall surface like new (for a complete bearing area).

### PRODUCTS

Belzona 1121 (Super XL Metal)

Belzona 1812 (Ceramic Carbide FP)

Belzona 4111 (Magma-Quartz)

Belzona 4911 (Magma TX Conditioner)

### SUBSTRATE

Steel

### APPLICATION METHOD

Application was carried out in accordance with modified version of the Belzona Know-How System Leaflet SHM-7.

### BELZONA FACTS

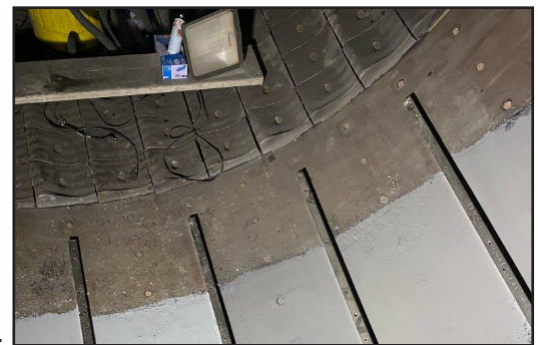
Existing customer does a lot of work with Belzona wear protection materials. The customer buys around 100 kg of Belzona 1812 per year for in-house repairs. An enquiry for the same work in a second mill was requested for a later date.

### PICTURES

1. Ball mill in a cement plant (diameter 4000mm)
2. Belzona 4111 and steel base for the right height (for Belzona 4111 and 1812 with two different templates)
3. Every second area complete rebuild with Belzona 1812 (4mm)
4. After removing the steel base 1812 was applied in the rest of the area



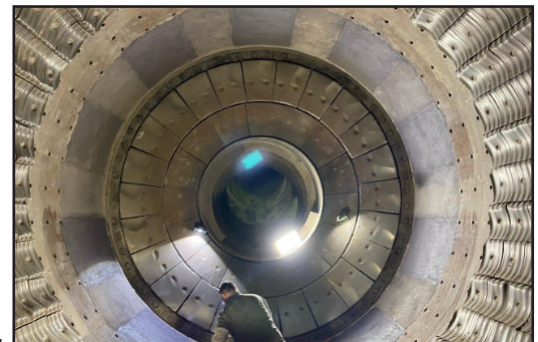
1.



2.



3.



4.

For more examples of *Belzona Know-How In Action*, please visit <http://khia.belzona.com>

Belzona products are manufactured under an ISO 9000 Registered Quality Management System.

[www.belzona.com](http://www.belzona.com)

Copyright © Belzona International Limited 2021

  
**BELZONA**<sup>®</sup>  
Repair • Protect • Improve