

BELZONA REBUILDS SPALLED BEAMS

ID: 1014

Industry: *Buildings & Structures*

Application: *WPA-Wall Problem Areas*

Substrate: *Reinforced concrete*

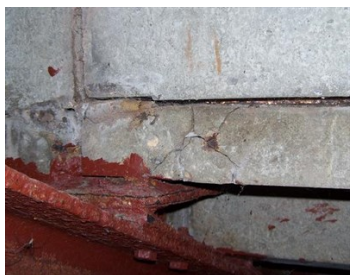
Products: ** Belzona® 4141 (Magma-Build) ,*

Customer Location: *Stadium, Eastern England*

Application Date: *February 2008*

Problem

Spalling and cracking of concrete caused by corrosion of reinforcement bars.



Photograph Descriptions

- * Typical cracked area ,
- * Surface cleaned and prepared ,
- * Application in progress ,
- * One of many finished applications ,

Application Situation

Supporting beams under the grandstand.

Application Method

Application was carried out in accordance with Belzona Know-How System Leaflet WPA-4.

Belzona Facts

After Engineers confirmed structural integrity of the stands, Architect recommended that the beams be repaired to prolong the useful life of the grandstand so Belzona were called in. The cost of repair was a fraction of the cost of any viable alternative. Belzona repairs were to provide ongoing corrosion protection to rebar and more than 60 individual faults were fixed.

For more examples of Belzona Know - How In Action, please visit <https://khia.belzona.com>

ISO 9001:2015

FS 695214

ISO 14001:2015

EMS 695213

Belzona products are
manufactured under an ISO
9000 Registered Quality
Management System.

www.belzona.com


BELZONA®
Repair • Protect • Improve