

Belzona 1984 Super Wrap II

ID: 10147

Industry: Steel & Metal Processing

Customer Location: Decatur, AL

Application: VPF-Valves, Pipes and Fittings

Application Date: March 2025

Substrate: Carbon steel

Products: Belzona 1984, Belzona SuperWrap II, Monti® MBX® Bristle Blaster®

Problem

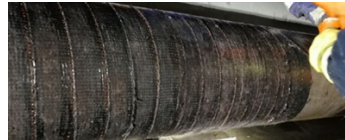
The customer wanted to do preventive maintenance on some of their older piping to prevent holes from wearing through.



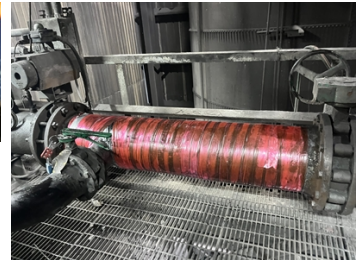
Removing build up and rust before applying Belzona 1984.



Prepping the surface with grinders and MBX Bristle Blaster.



Up close of applying Belzona 1984 and Super Wrap II



Completed Belzona 1984 Super Wrap II

Application Situation

For this application we were fortunate not to have to complete this project in a certain amount of time since it was for preventive maintenance. There was no downtime and no loss of production for this application. Belzona 1984 will save the client time and money in the future with this application.

Application Method

Using handheld grinders and a MBX Bristle Blaster we prepared the surface by removing years of buildup and rust. Followed by cleaning the surface using 100% MEK. Next, we pre-fit and cut the Carbon Fiber Super Wrap II three times for a 3-wrap system followed by pre-fit and cut of the consolidation tape. To complete the application, we applied Belzona 1984 to the pipes surface then to the Carbon-Glass Fiber Super Wrap II. Applying each wrap one at a time followed by the consolidation tape.

Belzona Facts

There were no initial cost savings as this was a preventative maintenance application. They chose this route from past applications we have completed for the client and the results they have received.

For more examples of Belzona Know - How In Action, please visit <https://khia.belzona.com>

ISO 9001:2015

FS 695214

ISO 14001:2015

EMS 695213

Belzona products are
manufactured under an ISO
9000 Registered Quality
Management System.

www.belzona.com

Copyright © Belzona International Limited 2025


BELZONA®
Repair • Protect • Improve