

# BELZONA PROVIDES CONSISTENT SUPPLY OF PULVERIZED FUEL

ID: 1073

Industry: Power

Application: SHM-Solids Handling Machinery

Customer Location: Thermal Power Plant, Northern Italy

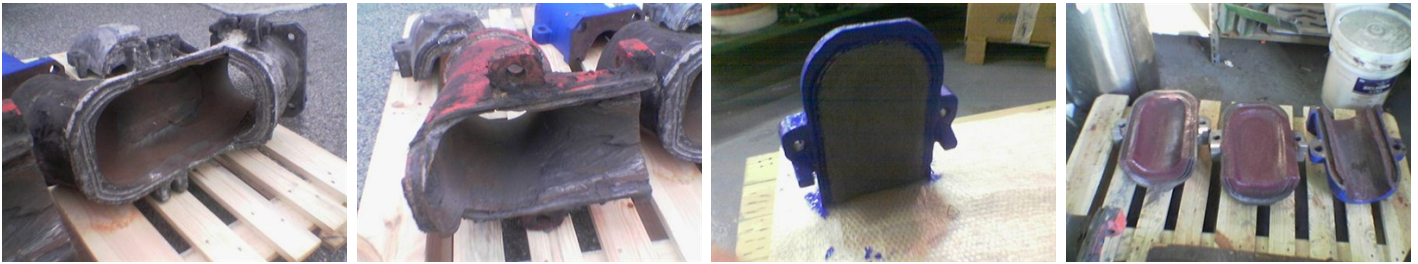
Application Date: Since 1998

Substrate: Cast Iron

Products: \* Belzona® 1811 (Ceramic Carbide),

## Problem

Dry abrasion from coal particles in pneumatic system causes wear at bends, curves and direction transitions.



## Photograph Descriptions

- \* A large bend ,
- \* An L shaped curve ,
- \* Completed cover ,
- \* More bend covers protected with Belzona ,

## Application Situation

Bends and curves in pneumatic conveyor system.

## Application Method

Application was carried out in accordance with Belzona Know-How System Leaflet SHM-13. The replaceable covers for transition points are routinely filled with the Belzona.

## Belzona Facts

No more random failures, Normally they last from August to August before being routinely relined. Occasionally Belzona® 1811 needed for small patch repairs. The engineers have tried welding and other materials but Belzona repairs provide the most consistent performance.

For more examples of Belzona Know - How In Action, please visit <https://khia.belzona.com>

ISO 9001:2015

FS 695214

ISO 14001:2015

EMS 695213

Belzona products are  
manufactured under an ISO  
9000 Registered Quality  
Management System.

[www.belzona.com](http://www.belzona.com)

**BELZONA**  
Repair • Protect • Improve