

BELZONA ANCHORS THE TRACK

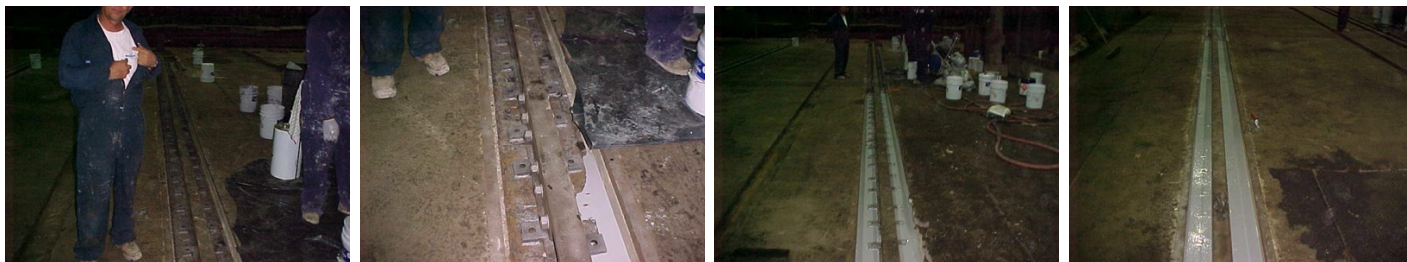
ID: 1202

Industry: *General Industry*
Application: *FPA-Floor Problem Areas*
Substrate: *Concrete and Steel*
Products: *Belzona® 4111 (Magma Quartz)*

Customer Location: *Steel Plant, North Alabama USA*
Application Date: *2002*

Problem

Grout had to achieve high compressive strength in short outage time



Photograph Descriptions

* After surface preparation , * Pouring the Belzona slurry , * grouting almost complete , * Completed project ,

Application Situation

Grout had failed around the blast furnace rails

Application Method

Application was carried out in accordance with modified Belzona Know-How System Leaflet FPA-10. The old grout was removed and the rail was aligned and shimmed. A slurry mix of Belzona® 4111 was poured the length of the tract.

Belzona Facts

The fast cure times allowed the mill to be operational within ten hours. Other grouts needed days for cure.

For more examples of Belzona Know - How In Action, please visit <https://khia.belzona.com>

ISO 9001:2015
FS 695214
ISO 14001:2015
EMS 695213

Belzona products are
manufactured under an ISO
9000 Registered Quality
Management System.

www.belzona.com


BELZONA®
Repair • Protect • Improve