

BELZONA COATS RISER IN SPLASH ZONE

ID: 1244

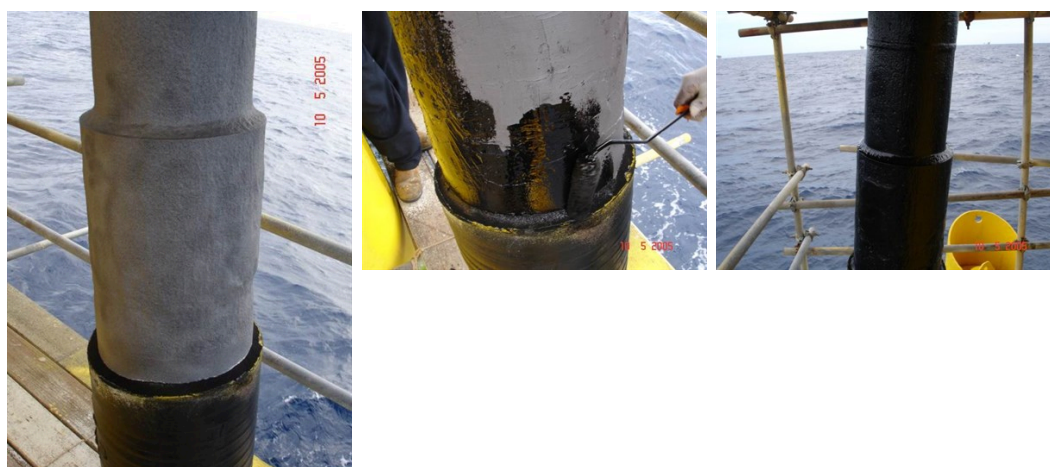
Industry: Oil & Gas
Application: SOS-Ships and Offshore Structures

Customer Location: Offshore Platform, Thailand
Application Date: May 2005

Substrate: Wet carbon steel
Products: Belzona® 5811 (Immersion Grade)<div>Belzona® 5831 (ST Barrier)
</div>

Problem

The offshore platform was experiencing severe corrosion and wall thickness loss of the riser pipe due to the splash zone area which may ultimately lead to leaks or rupture of the high pressure pipe.



Photograph Descriptions

* Corroded riser pipe , * Application of Belzona® 5831 , * Completed application ,

Application Situation

Corroded riser pipe

Application Method

Application was carried out in accordance with Belzona Know-How System Leaflet SOS-21. Belzona® 5811 was applied to the external paint surface above the splash zone. Belzona® 5831 was applied to the external paint surface in the splash zone area.

Belzona Facts

The repair using conventional paint was very difficult as the splash zone is regularly wet from sea waves and very slow curing. The paint will not properly cure if contaminated by little amount of sea water. Belzona system was chosen for its ease of application and specifically for its surface tolerance and ability to cure under wet conditions.

For more examples of Belzona Know - How In Action, please visit <https://khia.belzona.com>

ISO 9001:2015
FS 695214
ISO 14001:2015
EMS 695213

Belzona products are
manufactured under an ISO
9000 Registered Quality
Management System.

www.belzona.com

**BELZONA**
Repair • Protect • Improve