

BELZONA PROTECTS CONTACTER TANK

ID: 1396

Industry: Water / Wastewater
Application: TCC-Tanks and Chemical Containment Areas

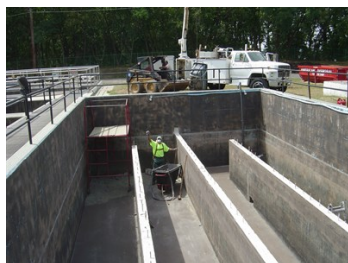
Customer Location: Water treatment plant, New Jersey
Application Date: 2008

Substrate: Concrete

Products: * Belzona® 5111 (Ceramic Cladding) ,
* Belzona® 5911 (Ceramic Conditioner) ,
* Belzona® 4111 (Magma Quartz) ,

Problem

Sodium Hypochlorite vapors had destroyed the concrete walls above the water line. The previous coating, an inexpensive commodity product, failed in this aggressive chemical environment.



Photograph Descriptions

- * The deteriorated tops of the concrete wall ,
- * Tops removed and cleaned up ,
- * Belzona® 5111 tinted sky blue. ,
- * Spillway rebuilt with Belzona® 4111 ,

Application Situation

Final Chlorine contact tank at municipal waste water plant.

Application Method

Application carried out in accordance with Belzona Know-How System Leaflets TCC-9 & WPA-2. The deteriorated tops of the concrete wall were removed and replaced. The walls were then prepared by grit-blasting before applying the Belzona® 5111 system (tinted blue). Belzona® 4111 was used to repair the spillway.

Belzona Facts

Belzona products were chosen for their proven chemical resistance to the aggressive chemicals used in modern-day waste water

For more examples of Belzona Know - How In Action, please visit <https://khia.belzona.com>

ISO 9001:2015
Q 09335
ISO 14001:2015
EMS 509612

Belzona products are
manufactured under an ISO
9000 Registered Quality
Management System.

www.belzona.com


BELZONA®
Repair • Protect • Improve

treatment.

For more examples of Belzona Know - How In Action, please visit <https://khia.belzona.com>

ISO 9001:2015	Belzona products are
Q 09335	manufactured under an ISO
ISO 14001:2015	9000 Registered Quality
EMS 509612	Management System.

www.belzona.com

