

BELZONA RESTORES COOLING WATER PUMP

ID: 1419

Industry: Oil & Gas

Application: CEP-Centrifugal Pumps

Substrate: Carbon Steel

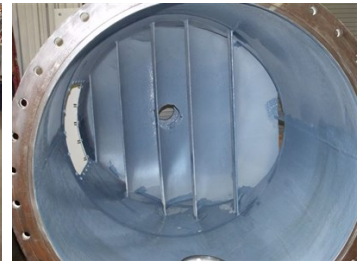
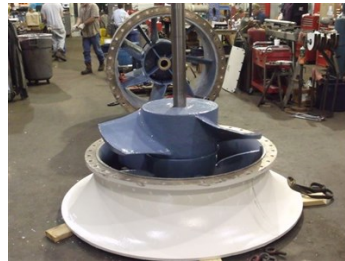
Products: * Belzona® 1111 (Supermetal) ,
* Belzona® 1341 (Supermetalgilde) ,

Customer Location: Refinery, Texas USA

Application Date: Fall of 2009

Problem

General corrosion over many years had degraded the operation of the pump.



Photograph Descriptions

- * Circulating water pump ,
- * Damaged suction bell ,
- * Impeller coated with Belzona® 1341 together with rebuilt and coated suction bell ,
- * Pump discharge coated with Belzona® 1341 ,

Application Situation

Main circulating water pump at refinery.

Application Method

Application was carried out in accordance with Belzona Know-How System Leaflets CEP-1 & -3. All pitting was rebuilt with Belzona® 1111. After the rebuild was complete two coats of Belzona® 1341 applied.

Belzona Facts

If left unprotected this pump eventually would have to be replaced. By rebuilding the pump and coating, they are able to preserve their investment and reduce downtime. In addition to these benefits the coating pays for itself through power savings due to increased efficiency imparted by the Belzona coating.

For more examples of Belzona Know - How In Action, please visit <https://khia.belzona.com>

ISO 9001:2015

FS 695214

ISO 14001:2015

EMS 695213

Belzona products are
manufactured under an ISO
9000 Registered Quality
Management System.

www.belzona.com

Copyright © Belzona International Limited 2024


BELZONA®
Repair • Protect • Improve