

BELZONA SAVES FINE PAPER PUMP CASING

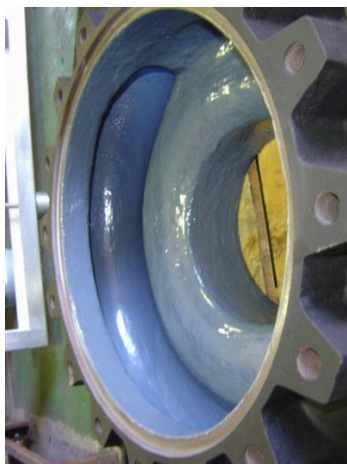
ID: 1432

Industry: *Pulp & Paper*
Application: *CEP-Centrifugal Pumps*
Substrate: *Cast Iron*
Products: ** Belzona® 1321 (Ceramic S -Metal) ,*

Customer Location: *Papermill, Port Elizabeth, South Africa.*
Application Date: *2009*

Problem

Badly corroded pump volute could not be put back in service in such bad condition



Photograph Descriptions

- * Corroded Pump Volute before application ,
- * Volute coated with Belzona® 1321 ,
- * The refurbished pump volute ready for service ,
- * ,

Application Situation

Pump handling fine pulp.

Application Method

The application was carried out in accordance with Belzona Know-How System Leaflet CEP-5.

Belzona Facts

In the past this pump casing would be scrapped and replaced at a cost of R20,000. The Belzona repair cost R4,000, thus saving the customer over R16,000 and providing additional years of protection and service.

For more examples of Belzona Know - How In Action, please visit <https://khia.belzona.com>

ISO 9001:2015
FS 695214
ISO 14001:2015
EMS 695213

Belzona products are
manufactured under an ISO
9000 Registered Quality
Management System.

www.belzona.com


BELZONA®
Repair • Protect • Improve

For more examples of Belzona Know - How In Action, please visit <https://khia.belzona.com>

ISO 9001:2015
FS 695214
ISO 14001:2015
EMS 695213

Belzona products are
manufactured under an ISO
9000 Registered Quality
Management System.

www.belzona.com

Copyright © Belzona International Limited 2024

