

BELZONA SEALS ROOFTOP EXPANSION JOINTS

ID: 1648

Industry: Buildings & Structures

Application: RPA-Roof Problem Areas

Substrate: Concrete

Products: * Belzona® 4111 (Magma Quartz) ,

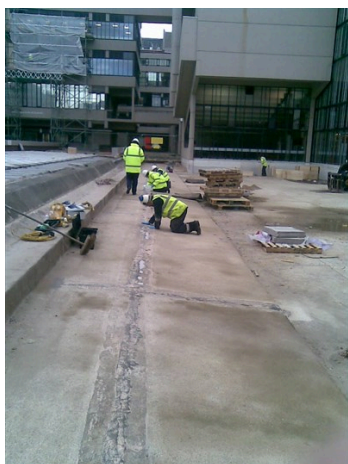
* Belzona® 3121 (MR 7) ,

Customer Location: University, Leeds, UK

Application Date: December 2010

Problem

Pond had been drained for refurbishment and concern was expressed over the waterproofing of the expansion joints.



Photograph Descriptions

- * Roof showing signs of damage ,
- * Close up of the damage ,
- * Application in progress ,
- * The application completed ,

Application Situation

Pond on roof of university

Application Method

Application was carried out in accordance with Belzona Know-How System Leaflets FPA-1 & RPA-1. After cleaning and drying, all loose concrete was removed and repaired using Belzona® 4111 followed by two coats of reinforced Belzona® 3121 to bridge the joints.

For more examples of Belzona Know - How In Action, please visit <https://khia.belzona.com>

ISO 9001:2015

FS 695214

ISO 14001:2015

EMS 695213

Belzona products are
manufactured under an ISO
9000 Registered Quality
Management System.

www.belzona.com


BELZONA®
Repair • Protect • Improve

Belzona Facts

The repairs were carried out in the depths of winter allowing the project to be completed ahead of schedule.

For more examples of Belzona Know - How In Action, please visit <https://khia.belzona.com>

ISO 9001:2015
FS 695214
ISO 14001:2015
EMS 695213

Belzona products are
manufactured under an ISO
9000 Registered Quality
Management System.

www.belzona.com

