

# CHIMNEY SHINES WITH BELZONA PROTECTION

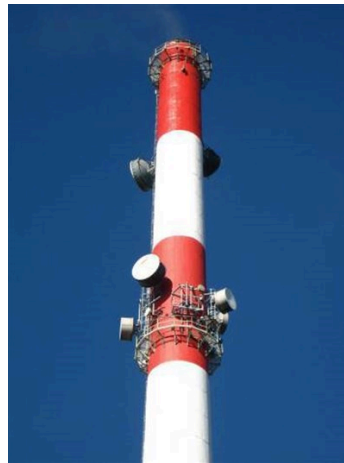
ID: 1717

Industry: Power  
 Application: WPA-Wall Problem Areas  
 Substrate: Concrete  
 Products: \* Belzona® 5111 (Ceramic Cladding),

Customer Location: Powerstation, Poland  
 Application Date: September, 2008

## Problem

The existing coating systems had reached the end of their life and broken down resulting in an unattractive and poorly protected chimney stack. The client undertook a comparison of Belzona with a competitor.



## Photograph Descriptions

- \* September 2008 pre works ,
- \* Application underway via rope access ,
- \* Completed application ,
- \* The top two, shiny bands are Belzona® 5111 ,
- \* Review in 2010 - note the top two bands are still shiny ,

## Application Situation

120m high Powerstation chimney

## Application Method

Application was carried out in accordance with a modified Belzona Know-How System Leaflet WPA-2. Rope Access Technicians were used in place of industrial scaffolding. The top two, most aggressively attacked bands were coated using Belzona® 5111 in red and white.

For more examples of Belzona Know - How In Action, please visit <https://khia.belzona.com>

ISO 9001:2015  
 Q 09335  
 ISO 14001:2015  
 EMS 509612

Belzona products are  
 manufactured under an ISO  
 9000 Registered Quality  
 Management System.

[www.belzona.com](http://www.belzona.com)

  
**BELZONA**  
 Repair • Protect • Improve

## Belzona Facts

After initial review it was noted that the Belzona® 5111 quite literally outshone the competition. Aside from the chemical and UV resistance needed for the application, the smooth surface of Belzona® 5111 did not attract dirt and would "self clean" with rain.

---

For more examples of Belzona Know - How In Action, please visit <https://khia.belzona.com>

ISO 9001:2015

Q 09335

ISO 14001:2015

EMS 509612

Belzona products are  
manufactured under an ISO  
9000 Registered Quality  
Management System.

[www.belzona.com](http://www.belzona.com)

