

LONGEVITY PUMP REPAIR WITH BELZONA

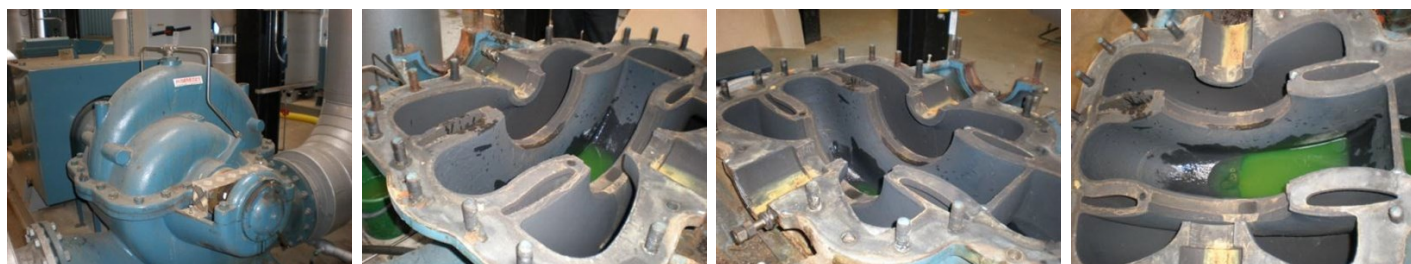
ID: 1911

Industry: Water / Wastewater
 Application: CEP-Centrifugal Pumps
 Substrate: Cast Iron
 Products: * Belzona® 1391 (Ceramic HT),

Customer Location: District heating station, Sweden
 Application Date: 1998 and 2011

Problem

The pumps suffered from severe erosion/corrosion as they transport hot water at temperatures of 90-100 °C.



Photograph Descriptions

- * View of the pump ,
- * 3. & 4. Before cleaning after 13 years in service ,

Application Situation

Pumps used to circulate district heating water in Stockholm.

Application Method

Application was carried out in accordance with Belzona Know-How System Leaflet CEP-3.

Belzona Facts

The pumps had been in continuous use to provide the southern part of Stockholm with heat. After 13 years the pump was stripped to replace a seal and the coating was still as good as new and no effects from temperature or erosion could be seen.

For more examples of Belzona Know - How In Action, please visit <https://khia.belzona.com>

ISO 9001:2015
 FS 695214
 ISO 14001:2015
 EMS 695213

Belzona products are
 manufactured under an ISO
 9000 Registered Quality
 Management System.

www.belzona.com


BELZONA
 Repair • Protect • Improve