

# BELZONA PROTECTS HYDROELECTRIC TURBINE CASING

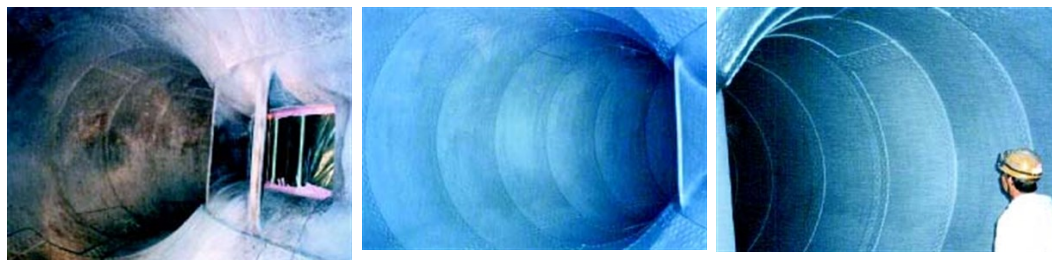
ID: 219

Industry: Power  
Application: CEP-Centrifugal Pumps  
Substrate: Cast iron  
Products: \* Belzona® 1341 (Supermetalgilde) ,

Customer Location: Hydroelectric power plant in Japan  
Application Date: March 1996

## Problem

*Erosion-corrosion caused by the flow of river water through the turbine over many years.*



## Photograph Descriptions

- \* The casing after grit blasting ,
- \* The casing after application of Belzona® 1341 ,
- \* The scale of the application is clearly evident ,

## Application Situation

Spiral casing of large Francis turbine

## Application Method

The application was carried out in accordance with Belzona Know-How System Leaflet CEP-10. The Belzona® 1341 was applied by airless spray to speed application on the large areas involved.

## Belzona Facts

The area was previously treated with a tar-epoxy coating, but this had to be re-applied annually. The Belzona® 1341 has provided long term protection. Annual inspections have been carried out and only localized repairs to minor mechanical damage have been required. Customer is totally satisfied with the application.

For more examples of Belzona Know - How In Action, please visit <https://khia.belzona.com>

ISO 9001:2015  
FS 695214  
ISO 14001:2015  
EMS 695213

Belzona products are  
manufactured under an ISO  
9000 Registered Quality  
Management System.

[www.belzona.com](http://www.belzona.com)

  
**BELZONA®**  
Repair • Protect • Improve