

BELZONA REPAIR AND PROTECTION OF SEA WATER LIFT PUMPS

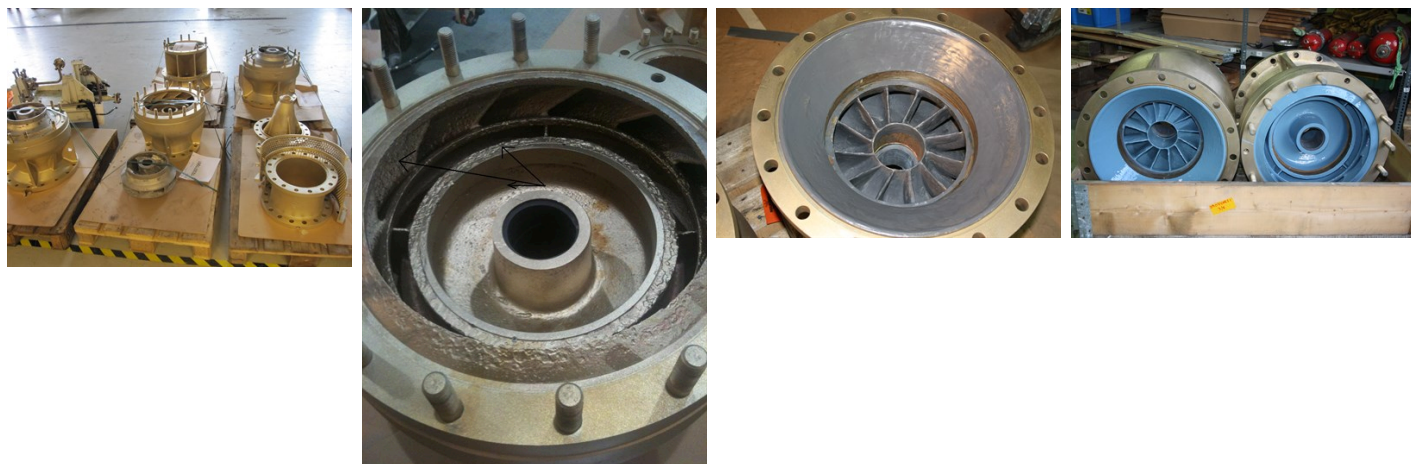
ID: 2257

Industry: General Industry
Application: CEP-Centrifugal Pumps
Substrate: Aluminium Bronze
Products: * Belzona 1311 (Ceramic R-Metal) ,
* Belzona 1341 (Supermetalglide) ,

Customer Location: Pump repair workshop, Norway
Application Date: September 2010

Problem

Pumps and various assembly parts were suffering from erosion and corrosion.



Photograph Descriptions

- * Application parts overview ,
- * Close up of corroded surface ,
- * Rebuilding with Belzona® 1311 ,
- * Complete application with 2 coats of Belzona® 1341 ,

Application Situation

Sea water lift pumps.

Application Method

Application was carried out in accordance with Belzona Know-How System Leaflets CEP-3 & CEP-5.

Belzona Facts

Rebuilding and coating of the equipment saved the customer both time and money as this equipment is both expensive and has a

For more examples of Belzona Know - How In Action, please visit <https://khia.belzona.com>

ISO 9001:2015
Q 09335
ISO 14001:2015
EMS 509612

Belzona products are
manufactured under an ISO
9000 Registered Quality
Management System.

www.belzona.com


BELZONA
Repair • Protect • Improve

6-8 months delivery period. The pumps have been in service since the repair and are still functioning perfectly. 4 similar pumps has been repaired for this customer since the first application.

For more examples of Belzona Know - How In Action, please visit <https://khia.belzona.com>

ISO 9001:2015
Q 09335
ISO 14001:2015
EMS 509612

Belzona products are
manufactured under an ISO
9000 Registered Quality
Management System.

www.belzona.com

