

# Mine locomotive axle repair

ID: 2457

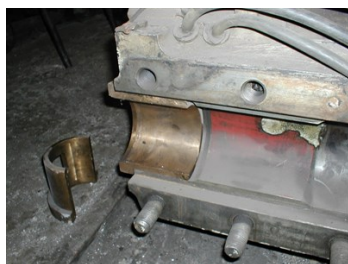
Industry: Mining & Quarrying  
Application: MPT-Mechanical Power Transmission

Customer Location: Brown coal Mine plant, Slovakia  
Application Date: 2005

Substrate: Steel  
Products: \* Belzona 1311 (Ceramic R-Metal) ,

## Problem

Failure of the shaft



## Photograph Descriptions

- \* 1. Mine locomotive ,
- \* 2. Failure bearing ,
- \* 3. Repair in progress ,
- \* 4. Renovated axle ,

## Application Situation

Due the slide assembly wear of shaft axle in bronze bearing the shaft unloading appeared. Direct mark of this failure is big noise level.

## Application Method

Application was carried out in accordance with Belzona Know-How System Leaflet MPT-1. Shaft was turned down and left with coarse thread before being rebuilt with Belzona 1311 followed by machining back to original diameter.

## Belzona Facts

First repair in 2005 was done, still working. From that year had been several of these repairs completed.

For more examples of Belzona Know - How In Action, please visit <https://khia.belzona.com>

ISO 9001:2015  
FS 695214  
ISO 14001:2015  
EMS 695213

Belzona products are  
manufactured under an ISO  
9000 Registered Quality  
Management System.

[www.belzona.com](http://www.belzona.com)

  
**BELZONA**  
Repair • Protect • Improve