

LIFT STATION WET WELL STAYS IN SERVICE WITH HELP FROM BELZONA

ID: 261

Industry: Water / Wastewater

Customer Location: Central Lift Station in West Palm Beach, Florida U.S.A.

Application: TCC-Tanks and Chemical Containment Areas

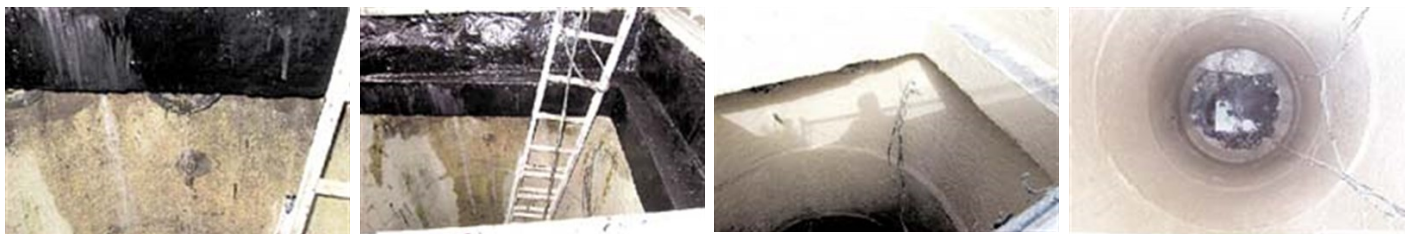
Application Date: October 2000

Substrate: Concrete

Products: * Belzona® 4141 (Magma Build) ,
* Belzona® 4911 (TX Conditioner) ,
* Belzona® 5811 (Immersion Grade) ,

Problem

Hydrogen sulfide attack deteriorated the concrete in the wet well area of a lift station.



Photograph Descriptions

- * Deteriorated concrete surface with water penetration from outside ,
- * First coat of Belzona® 5811 has been applied to the concrete surface ,
- * Second coat on the upper section of the wet well ,
- * Completed job ,

Application Situation

Lift station wet well.

Application Method

The application was carried in accordance with Belzona Know-How System Leaflet TCC-15.

Belzona Facts

Severely damaged concrete surfaces above the sewer level were rebuilt with Belzona® 4141 and the entire internal surface of the lift station wet well was protected by two coats of Belzona® 5811. The Belzona Solution offered minimal downtime and long term protection against hydrogen sulfide attack.

For more examples of Belzona Know - How In Action, please visit <https://khia.belzona.com>

ISO 9001:2015

FS 695214

ISO 14001:2015

EMS 695213

Belzona products are
manufactured under an ISO
9000 Registered Quality
Management System.

www.belzona.com


BELZONA®
Repair • Protect • Improve