

# BELZONA REPAIR TO PUMP SHAFT BEARING SURFACE

ID: 2692

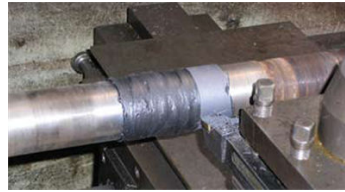
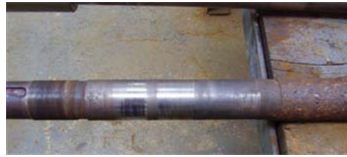
Industry: Power  
Application: MPT-Mechanical Power Transmission

Customer Location: Power Station, South Wales  
Application Date: August 2007

Substrate: Mild Steel  
Products: \* Belzona® 1131 (Bearing Metal),

## Problem

Damage had occurred to the drive shaft of the pump. Previously repaired using hot metal spraying which caused 'pick up', the customer required a fast repair.



## Photograph Descriptions

\* Pump waiting to be dismantled Damaged area on shaft clearly visible First machine cut being applied to Belzona® 1131 rebuild Completed repair ready for pump re-assembly ,

## Application Situation

Main cooling water pump at Power Station. The back up pump was the only pump supplying cooling water to the Power Station meaning the reserve pump had to be fixed immediately.

## Application Method

Application was carried out in accordance with Belzona Know-How System Leaflet MPT-9.

## Belzona Facts

Belzona method ensured a fast return to service. Belzona cold repair avoided potential distortion through use of heat.

For more examples of Belzona Know - How In Action, please visit <https://khia.belzona.com>

ISO 9001:2015  
FS 695214  
ISO 14001:2015  
EMS 695213

Belzona products are  
manufactured under an ISO  
9000 Registered Quality  
Management System.

[www.belzona.com](http://www.belzona.com)

**BELZONA**  
Repair • Protect • Improve