

# BELZONA RETURNS THIS 20-YEAR-OLD PUMP TO LIKE NEW CONDITION

ID: 274

Industry: Power

Customer Location: Electrical utility plant in San Antonio,  
Texas U.S.A.

Application: CEP-Centrifugal Pumps

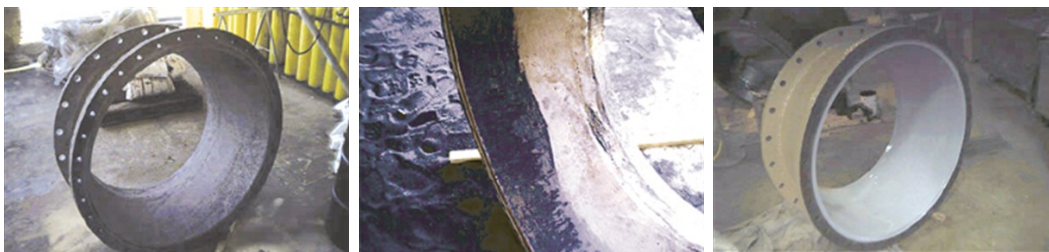
Application Date: November 2001

Substrate: Brass and cast iron

Products: \* Belzona® 1111 (Super Metal) ,  
\* Belzona® 1341 (Supermetalgilde) ,  
\* Belzona® 5811 (Immersion Grade) ,

## Problem

The pump was heavily scaled and had significant corrosion.



## Photograph Descriptions

- \* The pump diffuser connecting piece prior to the application ,
- \* Blasted with Belzona® 1111 applied ,
- \* The pump piece has been coated with Belzona® 1341 ,

## Application Situation

The pump had been in service for 20 years and was inspected during a planned outage.

## Application Method

The application was carried out in accordance with Belzona Know-How System Leaflets CEP-3, CEP-4, CEP-10.

## Belzona Facts

The pump was grit blasted and cleaned. Belzona® 1341 was applied to the pump volute, impeller and the inside surfaces of the flow diffuser. Belzona® 5811 was applied to the outside of the volute, the diffuser and the connecting pieces after which Belzona® 1111 was used to rebuild the worn areas on the diffuser and connecting pieces.

For more examples of Belzona Know - How In Action, please visit <https://khia.belzona.com>

ISO 9001:2015

FS 695214

ISO 14001:2015

EMS 695213

Belzona products are  
manufactured under an ISO  
9000 Registered Quality  
Management System.

[www.belzona.com](http://www.belzona.com)

  
**BELZONA®**  
Repair • Protect • Improve