

BELZONA INCREASES JET DRIVE EFFICIENCY ON THIS HIGH SPEED YACHT

ID: 279

Industry: Marine

Customer Location: Private, high-speed motor yacht in Florida, USA

Application: SOS-Ships and Offshore Structures

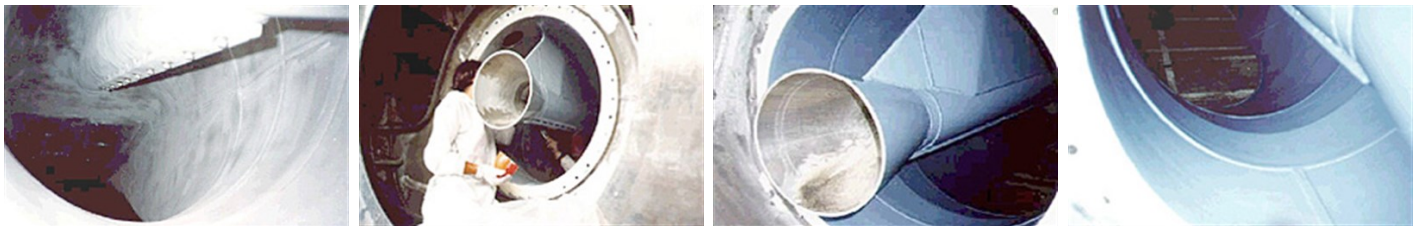
Application Date: 1999

Substrate: Aluminum

Products: * Belzona® 1111 (Super Metal) ,
* Belzona® 1341 (Supermetalglide) ,

Problem

Galvanic corrosion and cavitation. Erosion accelerated by entrained solids.



Photograph Descriptions

* Inlet tunnel, prior to surface preparation , * Application in progress , * & 4. Ready for service ,

Application Situation

Jet Drive Transom Bowl on a large high speed yacht.

Application Method

After blasting the substrate to a 3-mil profile, all the irregular surfaces were faired with Belzona® 1111 and then coated with two coats of Belzona® 1341. The application was carried out in accordance with Belzona Know-How System Leaflets SOS-1 and SOC-2.

Belzona Facts

There are two approvals for this particular application, one by KaMeWa North America and the other by ABS. The customer is pleased with the performance of the Belzona coating and refurbishes the jet drive every few years to maintain the hydrodynamic performance of the jet drive bowl.

For more examples of Belzona Know - How In Action, please visit <https://khia.belzona.com>

ISO 9001:2015

FS 695214

ISO 14001:2015

EMS 695213

Belzona products are
manufactured under an ISO
9000 Registered Quality
Management System.

www.belzona.com


BELZONA®
Repair • Protect • Improve

Copyright © Belzona International Limited 2024