

BELZONA RESTORES BEARING HOUSING TO LIKE-NEW CONDITION

ID: 280

Industry: *Pulp & Paper*

Application: *MPT-Mechanical Power Transmission*

Customer Location: *Paper Mill in Japan*

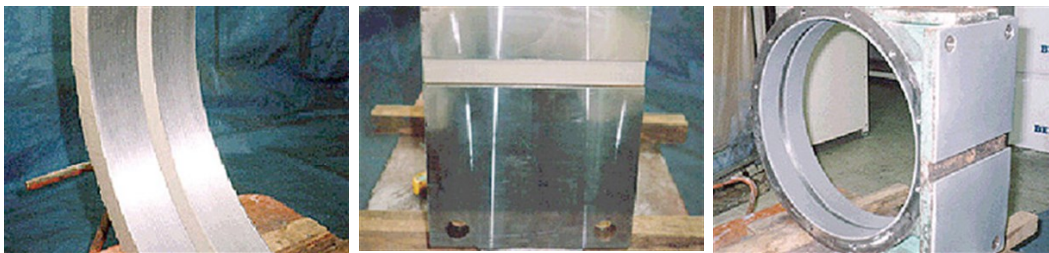
Application Date: *1997*

Substrate: *Steel*

Products: ** Belzona® 1111 (Super Metal) ,*

Problem

This winder bearing housing suffered mechanical damage from vibration, foreign substances and irregular rotational motion.



Photograph Descriptions

- * Surface preparation of bearing housing ,
- * View of damaged flange mounting ,
- * The bearing housing is ready for service ,

Application Situation

A bearing housing from the winder section of a paper machine used to support and provide tension to the reels of paper.

Application Method

The application was carried out in accordance with Belzona Know-How System Leaflet MPT-6. Applied by hand and machined to tolerances.

Belzona Facts

Belzona® 1111 (Super Metal) was machined to form a perfect cylindrical bearing surface while maintaining the lubrication seal. The flange mounting was also rebuilt and machined for a secure mating surface to the paper machine framework. The winder section of the paper machine must run continuously and reliably in order for the mill to remain profitable.

For more examples of Belzona Know - How In Action, please visit <https://khia.belzona.com>

ISO 9001:2015

FS 695214

ISO 14001:2015

EMS 695213

Belzona products are
manufactured under an ISO
9000 Registered Quality
Management System.

www.belzona.com

BELZONA
Repair • Protect • Improve