

BELZONA EMERGENCY PIPE REPAIR AT SCHOOL

ID: 2927

Industry: Buildings & Structures

Application: VPF-Valves, Pipes and Fittings

Substrate: Steel Pipe

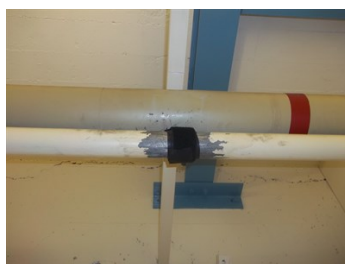
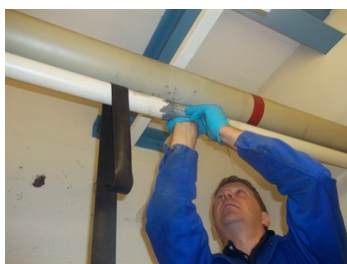
Products: * Belzona® 1291 (ES Metal) ,
* Belzona® 1221 (Super E Metal) ,

Customer Location: Worcester, UK

Application Date: November 2011

Problem

Two small pin holes had appeared under the paint in the main water pipe. Water was now leaking onto the floor creating a slip hazard over a large area.



Photograph Descriptions

- * Surface preparation ,
- * Application of Belzona® 1291 to stem the leak ,
- * Belzona® 1291 being held in place with tourniquet during cure ,
- * Belzona® 1221 applied with Belzona® 9341 (Reinforcement tape) over the Belzona® 1291 to complete the repair ,

Application Situation

Water pipe in a school boiler room

Application Method

Application was carried out in accordance with Belzona Know-How System Leaflet VPF-11

Belzona Facts

The mains water pipe could only shut down for a short period of time as it supplied the kitchens and the toilet block, a very fast repair was required. The repair was carried out within an hour with no disruption to the school or pupils.

For more examples of Belzona Know - How In Action, please visit <https://khia.belzona.com>

ISO 9001:2015

FS 695214

ISO 14001:2015

EMS 695213

Belzona products are
manufactured under an ISO
9000 Registered Quality
Management System.

www.belzona.com


BELZONA®
Repair • Protect • Improve