

# BELZONA SAVES THIS COMPANY LOST PRODUCTION TIME AND MAINTENANCE COSTS

ID: 308

Industry: *Pulp & Paper*

Customer Location: *International Papermill in Mississippi, USA*

Application: *MPT-Mechanical Power Transmission*

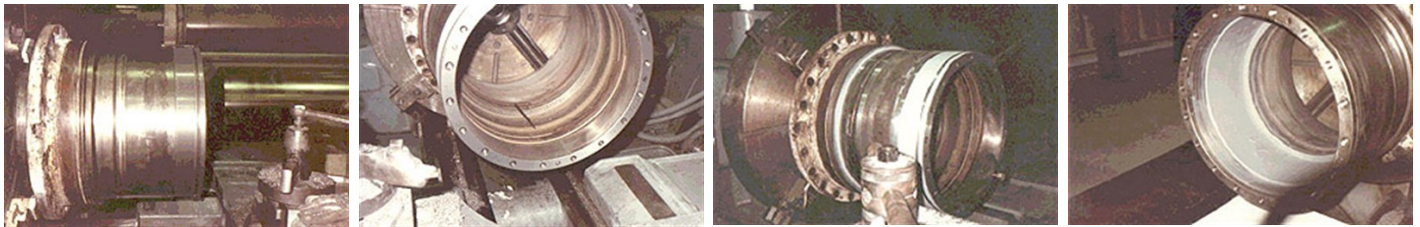
Application Date: *1994*

Substrate: *Steel*

Products: *\* Belzona® 1111 (Super Metal) ,*

## Problem

*A controlled crown roller, abbreviated as a cc roll, bends the shell against a very sturdy through shaft during calendering.*



## Photograph Descriptions

- \* Damage through shaft-male ,
- \* Damage through shaft-female ,
- \* Male component being machined ,
- \* Finished female component ,

## Application Situation

A controlled crown roller through shaft.

## Application Method

The application was carried out in accordance with Belzona Know-How System Leaflet MPT-1. Both mating surfaces were prepared in the lathe and rebuilt with Belzona® 1111 (Super Metal). Tolerances were maintained by machining with a carbide tipped tool.

## Belzona Facts

A German manufacturer as well as an American one make this equipment. The exact load distribution determines the quality of the finished paper.

For more examples of Belzona Know - How In Action, please visit <https://khia.belzona.com>

ISO 9001:2015

FS 695214

ISO 14001:2015

EMS 695213

Belzona products are  
manufactured under an ISO  
9000 Registered Quality  
Management System.

[www.belzona.com](http://www.belzona.com)

  
**BELZONA®**  
Repair • Protect • Improve