

# SEVERE EROSION IS NO MATCH FOR BELZONA

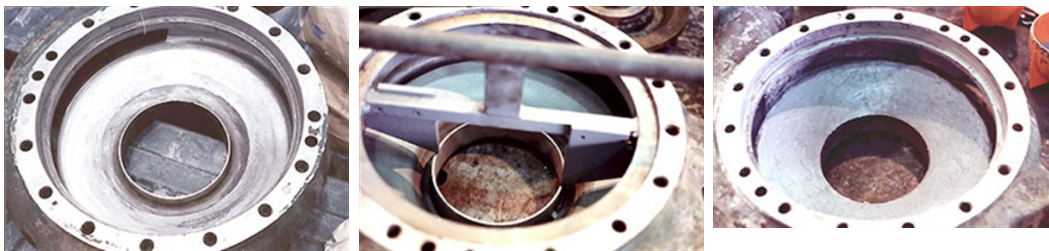
ID: 343

Industry: Sugar  
Application: CEP-Centrifugal Pumps  
Substrate: 316 Stainless steel  
Products: \* Belzona® 1111 (Super Metal) ,  
\* Belzona® 1391 ,

Customer Location: Sugar mill in Florida, U.S.A.  
Application Date: May 1994

## Problem

*The sugar liquor pump housing near the impeller had suffered from severe erosion and exhibited extensive metal loss.*



## Photograph Descriptions

- \* Housing demonstrating extensive wear ,
- \* A template was used to restore the original profile ,
- \* Housing rebuilt to the original profile and coated to handle high temperature service ,

## Application Situation

End suction pump for sugar liquor.

## Application Method

The application was carried out in accordance with a modified version of Belzona Know-How System Leaflets CEP-3 and CEP-5. A fixture was used to rebuild the extensive metal loss and maintain tolerances with the impeller.

## Belzona Facts

Two housings were completed. The replacement cost for these housings would have been \$11,000. The Belzona solution was \$1,665.00, which is an 85% cost savings versus replacement.

For more examples of Belzona Know - How In Action, please visit <https://khia.belzona.com>

ISO 9001:2015  
FS 695214  
ISO 14001:2015  
EMS 695213

Belzona products are  
manufactured under an ISO  
9000 Registered Quality  
Management System.

[www.belzona.com](http://www.belzona.com)

  
**BELZONA®**  
Repair • Protect • Improve