

BELZONA BONDS SPADE RUDDER BEARING ON COASTER

ID: 4157

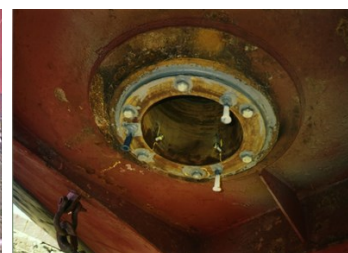
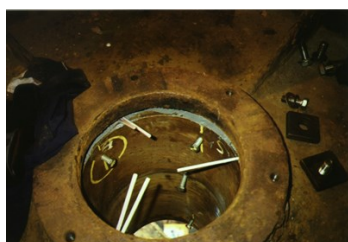
Industry: Marine
Application: SOS-Ships and Offshore Structures

Customer Location: Scotland, UK
Application Date: September 2002

Substrate: Steel and Bronze
Products: * Belzona® 1221 (super E Metal) Belzona® 1321 (Ceramic S Metal) ,

Problem

Significant Galvanic Corrosion - from 3 to 7mm had occurred, causing the bronze bush to be unsupported. This was a spade rudder and the forces on the bearing were great.



Photograph Descriptions

- * Vessel prepared for works in drydock ,
- * Top of bearing sealed using Belzona® 1221 ,
- * Injection of Belzona® 1321 into the space ,
- * Completed works. The injection plugs are removed at the same time as the rudder is assembled. ,

Application Situation

Spade rudder bearing on coastal ship.

Application Method

Application was carried out in accordance with Belzona System Leaflet SOS-9. The top of the bearing was sealed using the Belzona® 1221, and, due to the overhang over the top of the bearing, capillaries were set in to ensure good venting during the injection process.

Belzona Facts

All works were carried out within one day and witnessed by the Lloyds Register Surveyor. 12 kg of Belzona® 1321 was required to

For more examples of Belzona Know - How In Action, please visit <https://khia.belzona.com>

ISO 9001:2015
FS 695214
ISO 14001:2015
EMS 695213

Belzona products are
manufactured under an ISO
9000 Registered Quality
Management System.

www.belzona.com


BELZONA®
Repair • Protect • Improve

secure the bearing into position, providing a 100% contact between the bearing and the housing, and compressive load bearing capability significantly above the 10N/mm² required.

For more examples of Belzona Know - How In Action, please visit <https://khia.belzona.com>

ISO 9001:2015
FS 695214
ISO 14001:2015
EMS 695213

Belzona products are
manufactured under an ISO
9000 Registered Quality
Management System.

www.belzona.com

