

BELZONA SAVES AUTO INDUSTRY A CHUNK OF CASH

ID: 432

Industry: *General Industry*

Customer Location: *Auto Manufacturing Plant in Missouri, U.S.A.*

Application: *MPT-Mechanical Power Transmission*

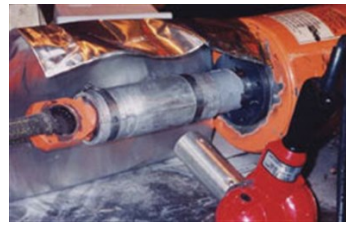
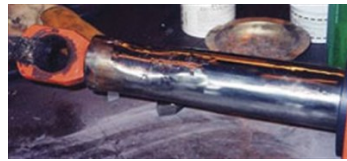
Application Date: *September 2003*

Substrate: *Steel*

Products: ** Belzona® 1111 (Super Metal) ,*

Problem

Worn cylinders - welding robot control



Photograph Descriptions

- * Equipment - welding robot ,
- * Worn cylinder ,
- * Almost there ,
- * Completed job ,

Application Situation

Worn shaft

Application Method

Application was carried out in accordance with Belzona Know-How System Leaflet MPT-2.

Belzona Facts

Welding robot control cylinder is simply a spring loaded shaft inside a housing. It controls the movement of the welder to and from the work - (slow going in, very quick return). Once the cylinders became worn, like the one in the photo, the whole assembly was

For more examples of Belzona Know - How In Action, please visit <https://khia.belzona.com>

ISO 9001:2015

FS 695214

ISO 14001:2015

EMS 695213

Belzona products are
manufactured under an ISO
9000 Registered Quality
Management System.

www.belzona.com

**BELZONA**
Repair • Protect • Improve

replaced at a cost of \$3,500. The Belzona in-situ repair cost less than 5% of the replacement. There are 400 welders in the production line with two cylinders each.

For more examples of Belzona Know - How In Action, please visit <https://khia.belzona.com>

ISO 9001:2015
FS 695214
ISO 14001:2015
EMS 695213

Belzona products are
manufactured under an ISO
9000 Registered Quality
Management System.

www.belzona.com

