

BELZONA REPAIR TO SHAFT AND KEYWAY OF DIESEL ENGINE TEST DYNAMOMETER

ID: 446

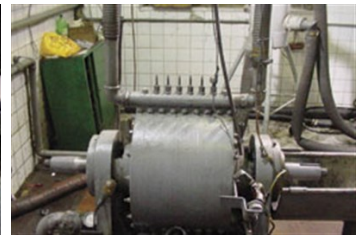
Industry: *General Industry*
Application: *MPT-Mechanical Power Transmission*

Customer Location: *Engine repair facility in Egypt*
Application Date: *April 2003*

Substrate: *Steel*
Products: ** Belzona® 1111 (Super Metal) ,*

Problem

The tapered coupling and keyway were damaged on the main power input shaft.



Photograph Descriptions

- * The damaged shaft and keyway ,
- * Application of Belzona® 1111 to the former ,
- * Former being clamped onto the shaft ,
- * Both ends of shaft rebuilt ,

Application Situation

Dynamometer used to measure engine power output

Application Method

Application was carried out in accordance with Belzona Know-How System Leaflets MPT-2 and MPT-4. A former was used to restore tapered shaft profile and at same time locate the keyway correctly.

Belzona Facts

Both ends of shaft repaired without having to dismantle the equipment.

For more examples of Belzona Know - How In Action, please visit <https://khia.belzona.com>

ISO 9001:2015
FS 695214
ISO 14001:2015
EMS 695213

Belzona products are
manufactured under an ISO
9000 Registered Quality
Management System.

www.belzona.com


BELZONA®
Repair • Protect • Improve