

BELZONA REPAIRS CONVEYOR DRIVE SHAFT IN-SITU

ID: 448

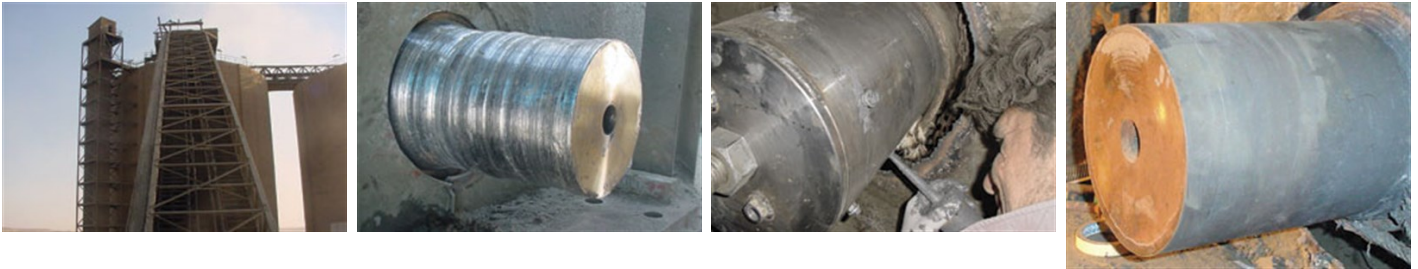
Industry: *General Industry*
Application: *MPT-Mechanical Power Transmission*

Customer Location: *Cement works in Egypt*
Application Date: *September 2003*

Substrate: *Steel*
Products: ** Belzona® 1311 (Ceramic R-Metal) ,*

Problem

Drive shaft was badly worn due to incorrect tightening of the adjustable sleeve which leads to relative motion between the shaft and the sleeve.



Photograph Descriptions

- * General view of the elevator lifting clinker into silos ,
- * Damage to the shaft ,
- * Former in place and Belzona® 1311 being injected ,
- * Accurate diameter restored to the shaft ,

Application Situation

Clinker elevator

Application Method

Application was carried out in accordance with Belzona Know-How System Leaflet MPT-2.

Belzona Facts

Belzona® 1311 was injected, using pneumatic injection pistol, into former constructed to restore correct shaft diameter. The Belzona repair was carried out without need to remove shaft from the plant saving many days work.

For more examples of Belzona Know - How In Action, please visit <https://khia.belzona.com>

ISO 9001:2015
FS 695214
ISO 14001:2015
EMS 695213

Belzona products are
manufactured under an ISO
9000 Registered Quality
Management System.

www.belzona.com

**BELZONA**
Repair • Protect • Improve