

# BELZONA PROVIDES PROTECTION FOR PRIMARY FAN PUMP

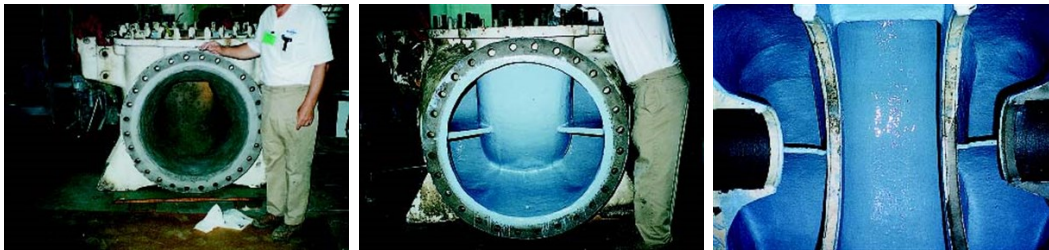
ID: 46

**Industry:** Pulp & Paper  
**Application:** CEP-Centrifugal Pumps  
**Substrate:** Cast iron  
**Products:** \* Belzona® 1311 (Ceramic R-Metal) ,  
\* Belzona® 1341 (Supermetalgilde) ,

**Customer Location:** Papermill in Oregon, U.S.A.  
**Application Date:** April 1996

## Problem

*White water chemical attack of this large critical pump caused corrosion pitting of the cast iron pump case, as well as bi-metallic corrosion of the stuffing box.*



## Photograph Descriptions

- \* Bottom section of the corroded fan pump ,
- \* Final application of Belzona® 1311 to pump case ,
- \* Rebuilt fan pump with Belzona® 1311 and Belzona® 1341 ,

## Application Situation

Primary fan pump suffering from erosion/corrosion.

## Application Method

The application was carried out in accordance with Belzona Know-How Leaflets CEP-2 and CEP-3.

## Belzona Facts

Consultant was flown from Alabama to Oregon to supervise the application. Corrosion and scale build-up were eliminated and the pump is operating more efficiently to this day.

For more examples of Belzona Know - How In Action, please visit <https://khia.belzona.com>

ISO 9001:2015  
FS 695214  
ISO 14001:2015  
EMS 695213

Belzona products are  
manufactured under an ISO  
9000 Registered Quality  
Management System.

[www.belzona.com](http://www.belzona.com)

  
**BELZONA®**  
Repair • Protect • Improve