

BELZONA REPAIRS PST AT WATER TREATMENT PLANT

ID: 4711

Industry: Water / Wastewater

Customer Location: Water treatment plant, Gloucestershire, UK

Application: FPA-Floor Problem Areas

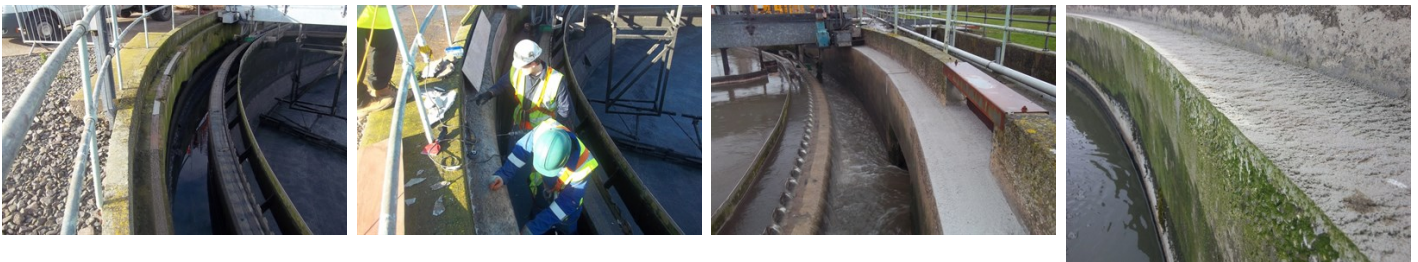
Application Date: October 2012

Substrate: Concrete

Products: * Belzona® 4131 (Magma Screed) ,
* Belzona® 2211 (MP Hi-Build Elastomer) ,

Problem

Walls of the running track had become badly worn and damaged over time due to rotation of the distributor. Some areas had been unsuccessfully repaired in the past.



Photograph Descriptions

- * Damaged running track and failed previous repairs ,
- * Shuttering boards being installed ,
- * Completed repair back in service ,
- * Repaired areas 12 months on ,

Application Situation

Concrete wall of a Primary Settlement Tank (PST)

Application Method

Application was carried out in accordance with Belzona Know-How System Leaflet FPA-1 & FPA-6. Once the surface was prepared, shuttering boards were fitted to the side walls to enable the Belzona® 4131 to be applied to accurate levels. Once the Belzona 4131 had cured the boards were removed and expansion joints cut into the repaired areas. These joints were then sealed with Belzona® 2211.

Belzona Facts

The Belzona solution was chosen due to the quick turnaround compared to other methods. Also the failure of the previous patch

For more examples of Belzona Know - How In Action, please visit <https://khia.belzona.com>

ISO 9001:2015

Belzona products are

FS 695214

manufactured under an ISO

ISO 14001:2015

9000 Registered Quality

EMS 695213

Management System.

www.belzona.com



repairs led them to the need for a permanent repair. The longevity of the Belzona solution backed up by case histories supported the proposal.

For more examples of Belzona Know - How In Action, please visit <https://khia.belzona.com>

ISO 9001:2015
FS 695214
ISO 14001:2015
EMS 695213

Belzona products are
manufactured under an ISO
9000 Registered Quality
Management System.

www.belzona.com

