

BELZONA EXTENDS LIFE OF CYCLONE CONES IN QUARRY WASH PLANT

ID: 4713

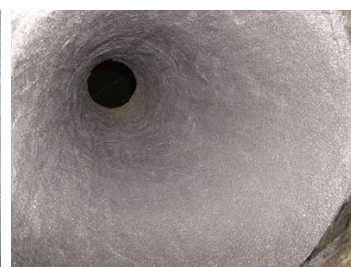
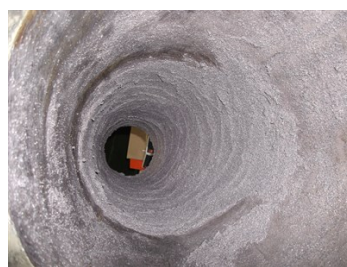
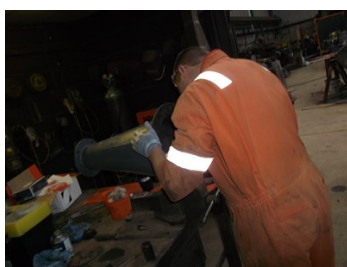
Industry: Mining & Quarrying
Application: SHM-Solids Handling Machinery

Customer Location: Lime stone quarry, SW, England
Application Date: February 2012

Substrate: Steel
Products: * Belzona® 1812 (Ceramic Carbide FP) ,

Problem

The cones suffer heavy levels of abrasion. The mean times between failures of the cones was not acceptable even after the rubber coating was applied and continuing stoppages of the plant had large cost implications. Belzona was selected for a trial application to increase the working life of these components.



Photograph Descriptions

- * Cone prior to application ,
- * Clients staff carrying out application ,
- * Belzona® 1812 during application ,
- * Completed application of Belzona® 1812 to cone ,

Application Situation

Cones on cyclone wash plant filtration. Non-protected cones were failing within one month and rubber coated cones only lasted for six months.

Application Method

The application was carried out in accordance with Belzona Know-How System Leaflet SHM-13.

For more examples of Belzona Know - How In Action, please visit <https://khia.belzona.com>

ISO 9001:2015
FS 695214
ISO 14001:2015
EMS 695213

Belzona products are
manufactured under an ISO
9000 Registered Quality
Management System.

www.belzona.com

**BELZONA**
Repair • Protect • Improve

Belzona Facts

Original cones with no coating last 1 month. ☒☒ Rubber lined cone lasts 6 months cost per cone £150 Belzona solution lasted 18 months. Cost per cone £200 The largest cost saving was on down time to the wash plant. After the successful trial the client has now made the Belzona solution the standard for all the abrasion areas within this plant.

For more examples of Belzona Know - How In Action, please visit <https://khia.belzona.com>

ISO 9001:2015
FS 695214
ISO 14001:2015
EMS 695213

Belzona products are
manufactured under an ISO
9000 Registered Quality
Management System.

www.belzona.com

