

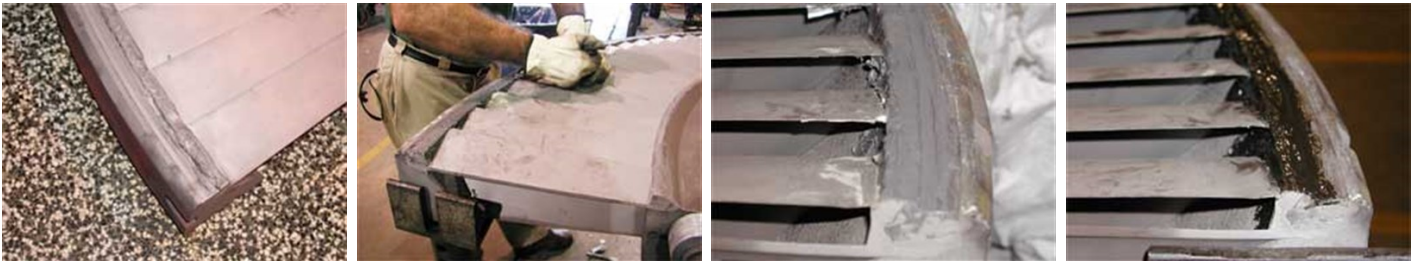
# BELZONA REPAIRS/PROTECTS LP STEAM DIAPHRAGM

ID: 482

Industry: *Power*  
Application: *CEP-Centrifugal Pumps*  
Substrate: *Steel*  
Products: *\* Belzona® 1111 (Super Metal) ,*  
*\* Belzona® 1591 (Ceramic HT Metal) ,*

Customer Location: *Power Plant - North Carolina, USA*  
Application Date: *May 2004*

Problem  
*Erosion*



## Photograph Descriptions

- \* 1. & 2. Erosion damage is evident ,
- \* 3. Belzona® 1111 (Super Metal) in place ,
- \* 4. Completed application ,

## Application Situation

Low Pressure Steam Turbine Diaphragm

## Application Method

Application was carried out in accordance with a modified version of Belzona Know-How System Leaflets CEP-3 and CEP-5.

## Belzona Facts

Sheet metal shields were produced to go over the diaphragms. Welding was considered, but time and costs associated with that were prohibitive. They were able to avoid the excessive cost of welding and its extended downtime. The Belzona approach kept the equipment out of service only one week, thereby keeping the power plant on schedule during their planned outage.

For more examples of Belzona Know - How In Action, please visit <https://khia.belzona.com>

ISO 9001:2015  
FS 695214  
ISO 14001:2015  
EMS 695213

Belzona products are  
manufactured under an ISO  
9000 Registered Quality  
Management System.

[www.belzona.com](http://www.belzona.com)

  
**BELZONA®**  
Repair • Protect • Improve