

LOWER HALF OF KNOCK OUT VESSEL PROTECTED WITH BELZONA

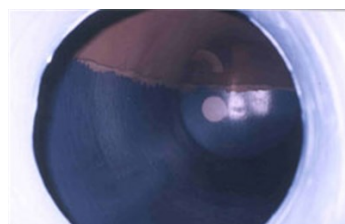
ID: 489

Industry: Chemical & Petrochemical
Application: TCC-Tanks and Chemical Containment Areas
Substrate: Steel
Products: * Belzona® 1311 (Ceramic R-Metal) ,
* Belzona® 1391 (Ceramic HT Metal) ,

Customer Location: Oil Refinery-Australia
Application Date: May 2004

Problem

Internal erosion corrosion in lower section caused by sour water. Vessel regularly steamed out.



Photograph Descriptions

- * Typical limited access to vessel through manway ,
- * Application of Belzona® 1391 underway ,
- * Completed application ,

Application Situation

Liquid knock out for flare gases. Also exposed to MEK, Toluene and gasoline.

Application Method

Application was carried out in accordance with Belzona Know-How System Leaflet TCC-5. Belzona® 1311 was used to repair pitting (particularly in 4-8 o'clock positions) and to smooth out weld repairs after which the lower half of the vessel was coated with Belzona® 1391.

Belzona Facts

Previous coating had failed. Belzona had previously been used for local repairs before this shut-down and had proven itself in the environment.

For more examples of Belzona Know - How In Action, please visit <https://khia.belzona.com>

ISO 9001:2015
FS 695214
ISO 14001:2015
EMS 695213

Belzona products are
manufactured under an ISO
9000 Registered Quality
Management System.

www.belzona.com


BELZONA®
Repair • Protect • Improve