

REPAIR AND COATING FOR A BOILER FEED PUMP

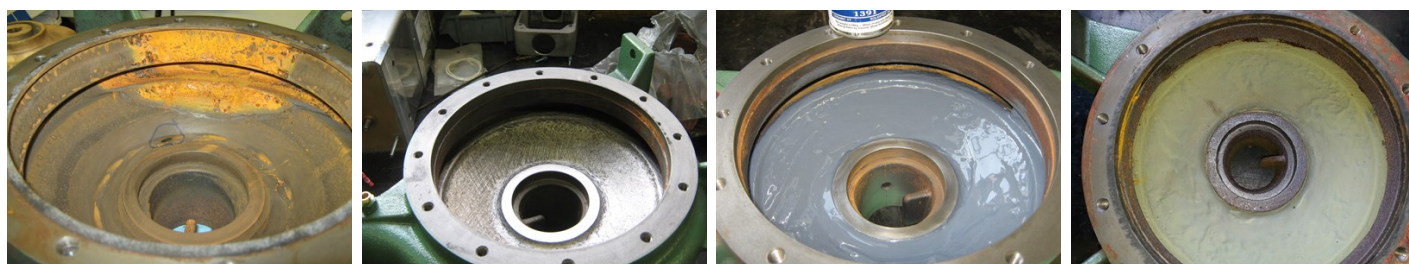
ID: 4937

Industry: Heating, Ventilation & Air Conditioning
 Application: CEP-Centrifugal Pumps
 Substrate: Steel
 Products: * Belzona 1391 (Ceramic HT) ,

Customer Location: Windsor, Ontario, Canada
 Application Date: December 2012

Problem

After 3 to 4 months in use the boiler feed pump was suffering from general corrosion/erosion and the metal shavings in the feed eventually would lead to a through hole in the casing.



Photograph Descriptions

- * Boiler feed pump prior to application ,
- * Preparation completed ,
- * Application completed ,
- * Fifteen months after application. ,

Application Situation

Boiler feed pump.

Application Method

Application was carried out in accordance with Belzona Know-How System Leaflet CEP-5 for repair of general erosion damage. The surface was prepared by grinding the entire surface to be coated. Belzona 1391 was applied with a stiff bristle brush as a two coat system in accordance with the Belzona Instructions For Use.

Belzona Facts

Belzona 1391 has been designed to operate under continuous immersion of temperatures up to 120°C (248°F) as the boiler feed was working at a temperature of 93°C (200°F). Fifteen months (March 2014) after application the system is in great working order with no corrosion/erosion or holes.

For more examples of Belzona Know - How In Action, please visit <https://khia.belzona.com>

ISO 9001:2015
 FS 695214
 ISO 14001:2015
 EMS 695213

Belzona products are
 manufactured under an ISO
 9000 Registered Quality
 Management System.

www.belzona.com


BELZONA[®]
 Repair • Protect • Improve

For more examples of Belzona Know - How In Action, please visit <https://khia.belzona.com>

ISO 9001:2015
FS 695214
ISO 14001:2015
EMS 695213

Belzona products are
manufactured under an ISO
9000 Registered Quality
Management System.

www.belzona.com

Copyright © Belzona International Limited 2025

