

# BELZONA REPAIRS GLASS LINED REACTOR

ID: 4940

Industry: Chemical & Petrochemical  
Application: TCC-Tanks and Chemical Containment Areas

Customer Location: Chemical Plant, Israel

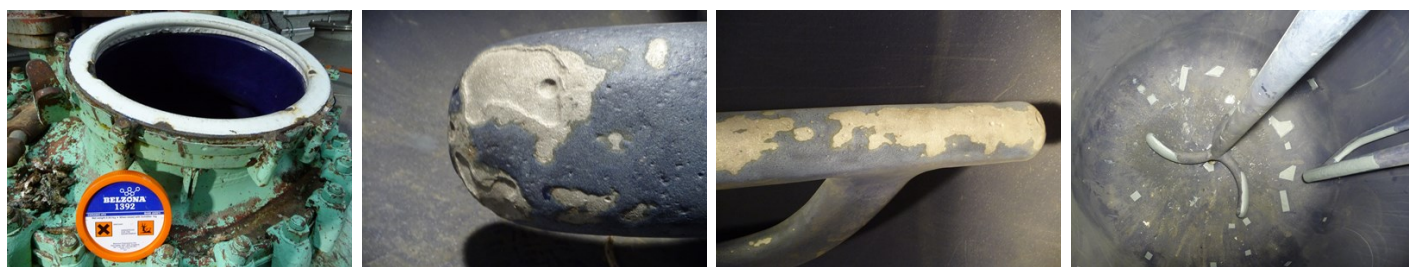
Application Date: 2009

Substrate: Steel & Glass

Products: \* Belzona 1311 (Ceramic R-Metal) ,  
\* Belzona 1392 (Ceramic HT2) ,

## Problem

*Due to the operational environment the glass lining in the reactor and on the agitator paddle was severely damaged exposing the base metal to severe corrosion.*



## Photograph Descriptions

- \* The reactor ,
- \* Damage on the paddle ,
- \* Reactor damage ,
- \* Completed reactor repairs ,

## Application Situation

Chemical Reactor used to produce industrial cleaners and disinfectants. The process uses a mixture of acids and alkalis at an operating temperature up to 70°C.

## Application Method

Application was carried out in accordance with Belzona Know How System Leaflets TCC-3.

## Belzona Facts

Due to the extent of damage, especially on the paddle area, no other repairs alternative was available. The only option was replacing the reactor with new unit. The Belzona solution was completed on site and the unit was back to service in two days. The unit was inspected in 2012 and apart from slight erosion on the paddle was found in excellent condition.

For more examples of Belzona Know - How In Action, please visit <https://khia.belzona.com>

ISO 9001:2015  
FS 695214  
ISO 14001:2015  
EMS 695213

Belzona products are  
manufactured under an ISO  
9000 Registered Quality  
Management System.

[www.belzona.com](http://www.belzona.com)

  
**BELZONA**<sup>®</sup>  
Repair • Protect • Improve

---

For more examples of Belzona Know - How In Action, please visit <https://khia.belzona.com>

ISO 9001:2015  
FS 695214  
ISO 14001:2015  
EMS 695213

Belzona products are  
manufactured under an ISO  
9000 Registered Quality  
Management System.

[www.belzona.com](http://www.belzona.com)

*Copyright © Belzona International Limited 2025*

