

Hydro turbine guide vanes repaired and protected with BELZONA

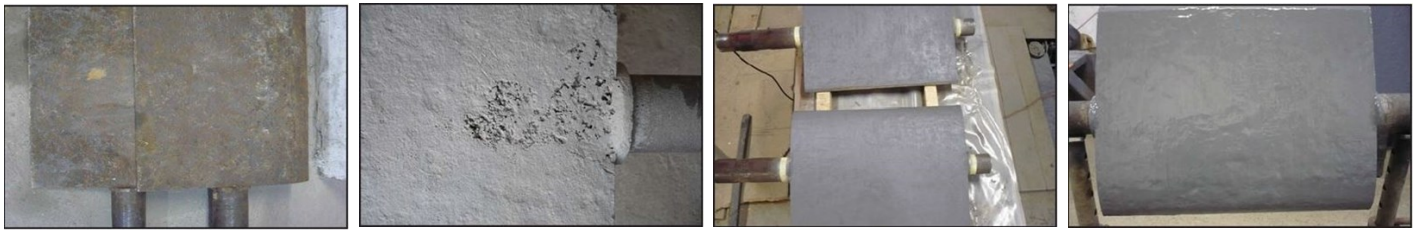
ID: 5158

Industry: Power
Application: CEP-Centrifugal Pumps
Substrate: Cast iron
Products: * Belzona 1311 (Ceramic R-Metal) ,
* Belzona 1321 (Ceramic S-Metal) ,

Customer Location: Power plant, Ukraine
Application Date: January-February 2012

Problem

Erosion and cavitation of turbine vanes



Photograph Descriptions

- * General view of the turbine guide vanes surface preparation ,
- * Grit blasting of the turbine guide vanes ,
- * Geometry of guide vanes repaired using Belzona 1311 ,
- * Repaired surfaces of the guide vanes after the application of Belzona 1311 and Belzona 1321 ,

Application Situation

Erosion/corrosion and cavitation by pressure to the face of turbine guide vanes revealed during annual inspection

Application Method

The application was carried out according to Belzona Know-How System Leaflet CEP-1 and FBC-2. Belzona 1311 was used to resurface the profile. Belzona 1321 was applied to improve efficiency and protect against erosion/corrosion.

Belzona Facts

Replacement was considered unacceptable due to a short shut down. Belzona was the only alternative. All work has been conducted in a short time, and this has allowed to minimize time and money

For more examples of Belzona Know - How In Action, please visit <https://khia.belzona.com>

ISO 9001:2015
FS 695214
ISO 14001:2015
EMS 695213

Belzona products are
manufactured under an ISO
9000 Registered Quality
Management System.

www.belzona.com


BELZONA[®]
Repair • Protect • Improve