

BELZONA EXTENDS THE LIFE OF DAMAGED TIRE

ID: 5196

Industry: *Mining & Quarrying*

Customer Location: *BC, Canada*

Application: *SHM-Solids Handling Machinery*

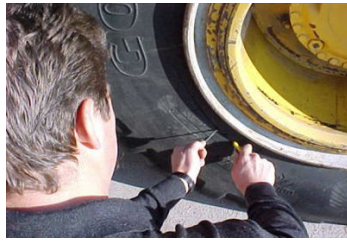
Application Date: *1999*

Substrate: *Rubber*

Products: ** Belzona 2211 (MP Hi-Build Elastomer) ,*

Problem

The side wall of a tire, close to the rim, had been cut by a stray piece of metal



Photograph Descriptions

- * Vehicle with damaged tire ,
- * Initial preparation underway with the removal of any loose material ,
- * The surface around the damaged area is prepared with a special roughing tool ,
- * Completed application. ,

Application Situation

Repair of the side wall of a tire

Application Method

Application carried out in accordance with a modified version of Belzona Know-How System Leaflet SHM-1. Surface around damaged area cleaned of loose road debris and roughen with a steel wire brush. Belzona 2911 (Elastomer QD Conditioner) was applied prior to Belzona 2211 to ensure proper adhesion.

Belzona Facts

Repairing cuts like this as soon as possible after the event ensures that no further degradation of the tire will take place resulting from water or debris.

For more examples of Belzona Know - How In Action, please visit <https://khia.belzona.com>

ISO 9001:2015

Belzona products are

FS 695214

manufactured under an ISO

ISO 14001:2015

9000 Registered Quality

EMS 695213

Management System.

www.belzona.com


BELZONA[®]
Repair • Protect • Improve